

STATUS

På lager

REF. NR.

G1584

ENGINE

Isuzu 6BD 1PV

GENERATOR

Stamford

HZ

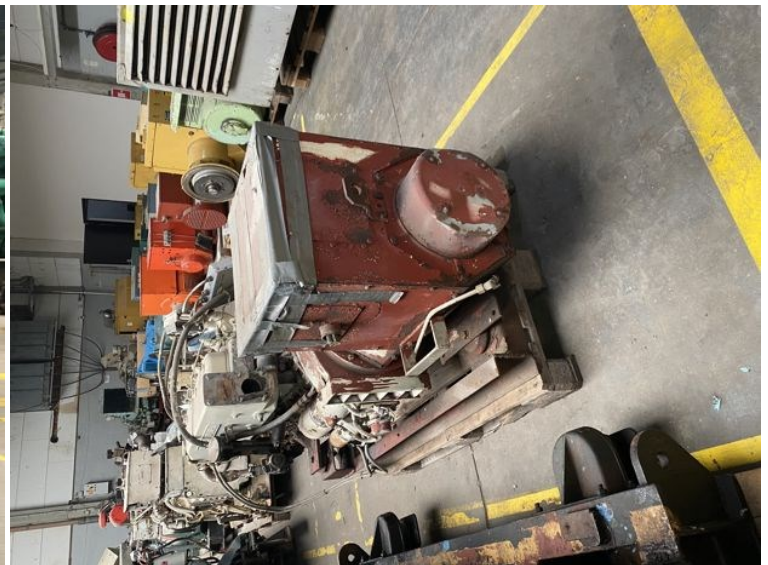
50

VOLT

230

KVA

57,5



DATE 15/03/2015 SERIAL No. C06082700

| | | | | | | | |
|------------------|-------|--------------|-------|------------------|------|-------|---|
| PKV | 13.81 | KVA | 57.25 | Hz | 50 | PHASE | 3 |
| PF | 0.8 | RPM | 1500 | STATOR WDG | 210 | | |
| VOLTS | 230 | AMPS | 272.9 | STATOR CON | 8700 | | |
| RATING | 50MT | AMBIENT TEMP | 25 °C | ENCLOSURE | IP23 | | |
| EXCITATION VOLTS | 54 | AMPS | 1.9 | INSULATION CLASS | | | |

450-14935

WARNING REFER TO INSTRUCTION BOOK BEFORE PLASH OR MEGGER TESTING

STAMFORD
AN ALTERNATOR FROM
NEWAGE INTERNATIONAL

BS5000
NEMA MG1-22
IEC 34-1

MADE IN ENGLAND FOR NEWAGE NORGE, OSLO