

STATUS

På lager

REF. NR.

G1683

ENGINE

Valmet 420 DSG Nr. C1574 Nordhavn: M1922 Årg. 1993

GENERATOR

DAE Type GA4545

VOLT

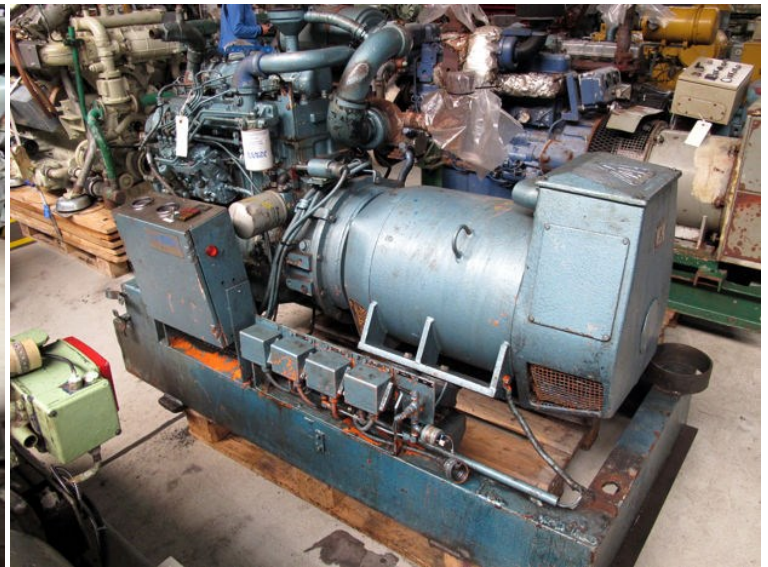
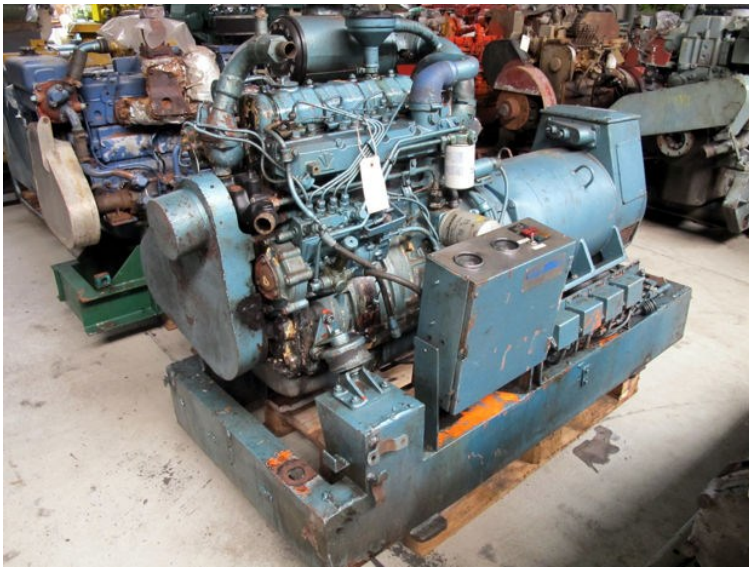
380

KVA

55

REMARKS

65.457 hours



SELF-REGULATING ALTERNATOR  
Radio interference suppressed

Type	GA 45 45	No.	425195		
kVA	55	Rating	CONT		
kW		r/min	1500		
V	380	A	83,7		
~	50	Phases	3	cos $\phi$	0,8
Volts to neutral	220	Class	FF		

Made by **DANSK ELEKTROMOTOR LAGER**