

STATUS

På lager

REF. NR.

G2211

ENGINE

Sisu 420 DSMG Year 2000

GENERATOR

Stamford UCM 274G2

VOLT

400

KVA

77,5

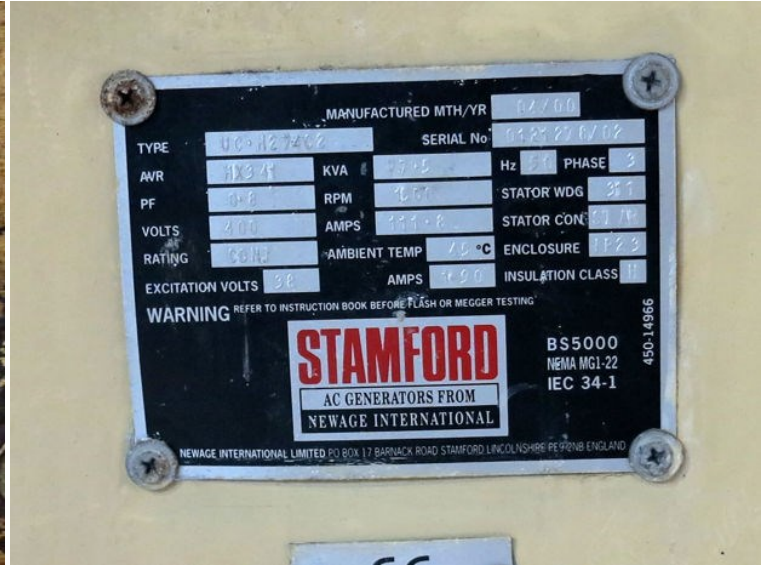
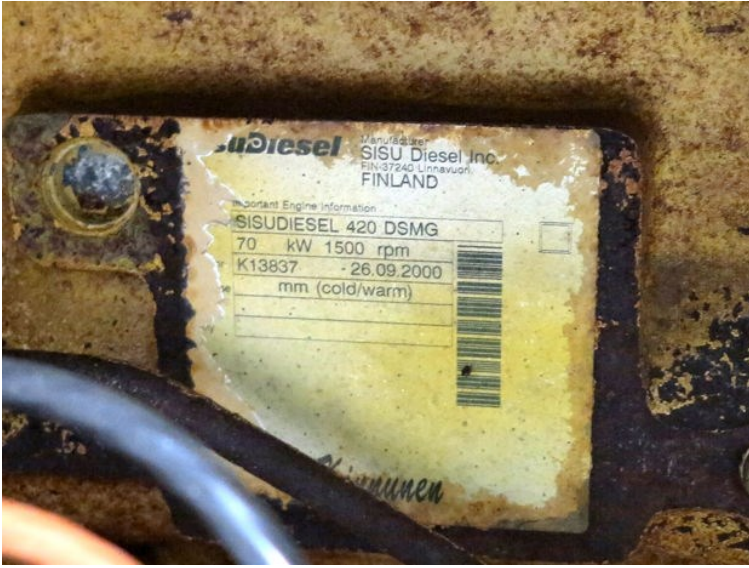
HZ

50

REMARKS

17.603 hours





SISU Diesel Manufacturer
SISU Diesel Inc.
FIN-37240 Uusikaupunki
FINLAND

Generator Engine Information
SISUDIESEL 420 DSMG
70 kW 1500 rpm
K13837 - 26.09.2000
mm (cold/warm)

MANUFACTURED MTH/YR		02/00					
TYPE	UC0127207	SERIAL No.	7125276712				
AVR	120 V	KVA	75.5	Hz	50	PHASE	3
PF	0.8	RPM	1500	STATOR WDG	357		
VOLTS	400	AMPS	133.8	STATOR CON.	1.1		
RATING	60 Hz	AMBIENT TEMP	40 °C	ENCLOSURE	1123		
EXCITATION VOLTS	24	AMPS	1.50	INSULATION CLASS	H		

WARNING REFER TO INSTRUCTION BOOK BEFORE FLASH OR MEGGER TESTING

STAMFORD
AC GENERATORS FROM
NEWAGE INTERNATIONAL

BS5000
NEMA MG1-22
IEC 34-1

450-14966

NEWAGE INTERNATIONAL LIMITED PO BOX 17 BARNACK ROAD STAMFORD LINCOLNSHIRE PE9 2NB ENGLAND