

STATUS

På lager

REF. NR.

G2471

ENGINE

Cummins MDKBP-7446799,1500/1800 rpm, KW 13,5/17

GENERATOR

Cummins

HZ

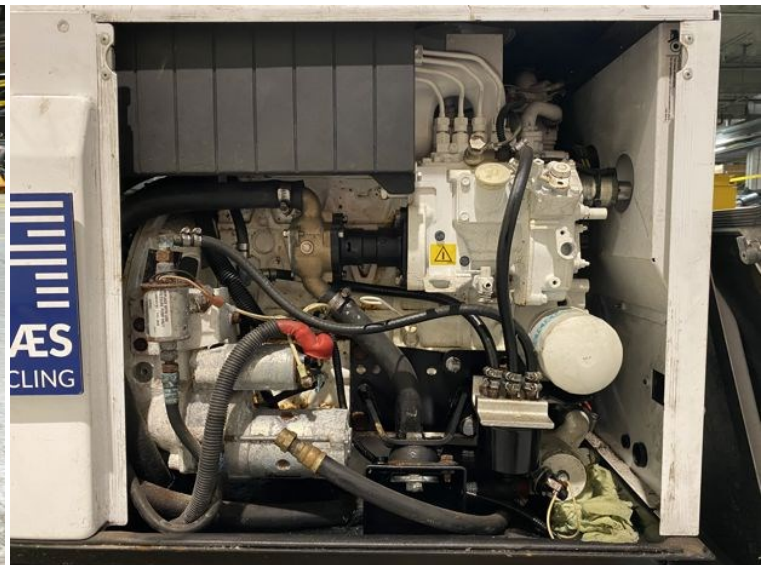
50/60

VOLT

115/230

KVA

13,5/17





Cummins **MDKBP/R/V**

SERVICE DATA

Fuel filter	0149-2106
Oil filter	0122-0810
Sea water pump	
Impeller	0132-0499
Impeller/O-Ring Kit	0541-1521
Zinc	0130-4434
V-belt	
Neg Gnd (12V)	0185-7016
Neg Gnd (24V)	0511-0252
Iso Gnd	0511-0211

CAPACITIES

Oil with filter	7.6 ltr (8.0 qt)
Engine coolant (50/50)	7.6 ltr (8.0 qt)

OPERATION

(Read and follow Operator's Manual instructions and precautions.)

START

1. Push and hold START (Indicator light flashes during glow and crank.)
2. Release START when green genset run light is on.

STOP

1. Touch STOP

SERVICE CODES

Preheat/Crank	Rapid
High Coolant Temp	1
Low Oil Pressure	2
See Manual	3
Excessive Engine Cranking	4
No Raw Water Flow	7

0098-8904

Cummins IMPORTANT EMISSIONS CONTROL INFORMATION
CUMMINS POWER GENERATION
1400 73rd Ave. NE
Minneapolis, MN 55432
Made in U.S.A.

Model No: MDKBP - 7446799 Spec: E

Excessive Engine Cranking **7**
No Raw Water Flow **0098-8904**

Cummins IMPORTANT EMISSIONS CONTROL INFORMATION
CUMMINS POWER GENERATION
1400 73rd Ave. NE
Minneapolis, MN 55432
Made in U.S.A.

Model No: **MDKBP - 7446799** Spec: **E**

S/N: **E110218371**

	KVA	Pf	KW	PH	RPM
50 hz:	13.5	1.0	13.5	1	1500
60 hz:	17	1.0	17	1	1800

As Manufactured
Freq: 50HZ AC Volts: 115/230V Amps: 117.4/58.7

Options: A347 - 2 B380 - 2 E079 - 2	Fuel: Diesel	Bat: 12V
F142 - 2 E086 - 2 L047 - 2	Software Config 14	
R01 - 2 B459 - 2 SPEC - E	Wire Diagram:	
B543 - 2 13 - 5MDKBP	0630 - 2694	

INSULATION: NEMA CLASS H AMBIENT 40C

REFER TO OPERATOR'S MANUAL FOR MAINTENANCE SPECIFICATIONS AND ADJUSTMENTS 99-2495 RAD

CE

MDKBP/R/V

SERVICE DATA

Fuel filter	0149-2106
Oil filter	0122-0810
Sea water pump	
Impeller	0132-0499
Impeller/O-Ring Kit	0541-1521
Zinc	0130-4434
V-belt	
Neg Gnd (12V)	0185-7016
Neg Gnd (24V)	0511-0252
Iso Gnd	0511-0211

CAPACITIES

Oil with filter	7.6 ltr (8.0 qt)
Engine coolant (50/50)	7.6 ltr (8.0 qt)

OPERATION
(Read and follow Operator's Manual instructions and precautions.)

START
1. Push and hold START (Indicator light flashes during glow and crank.)
2. Release START when green genset run light is on.

STOP
1. Touch STOP

SERVICE CODES

Preheat/Crank	Rapid
High Coolant Temp	1
Low Oil Pressure	2
See Manual	3
Excessive Engine Cranking	4
No Raw Water Flow	7

0098-8904

IMPORTANT EMISSIONS CONTROL INFORMATION
CLIPPING POWER GENERATION
1400 7364 Rev. 02
Minneapolis, MN 55402

Model No.	MDKBP-7468799	Spec:	E
Part No.	E110218371	Min	1.0
		Max	1.0
		Min	1.0
		Max	1.0
		Min	1.0
		Max	1.0
		Min	1.0
		Max	1.0

AS MANUFACTURED 4000 RPM 12000 HRS

Approx. 4000 - 12000 RPM Fuel Diesel 12V 12000 HRS

Approx. 12000 - 15000 RPM Fuel Diesel 12V 12000 HRS

Approx. 15000 - 18000 RPM Fuel Diesel 12V 12000 HRS

REGULATION: MEETS CLASS II, SUBJECT 4000 HRS

REFER TO OPERATOR'S MANUAL FOR MAINTENANCE, SPECIFICATIONS AND ADJUSTMENTS

CE

Fire Port

EMISSION CONTROL INFORMATION
(SUPPLEMENTAL LABEL)

THIS MARINE ENGINE COMPLIES WITH U.S. EPA REGULATIONS FOR 2011 Tier 3.

Kubota KUBOTA Corporation

MODEL :	V2003-M-BG-ET02	ENGINE DISP./CYL :	0.50L
FAMILY :	BKXN02.0FCC	ECS :	EM
MAXIMUM POWER :	24 kW	CATEGORY :	1
POWER DENSITY :	12 kW/L		
USEFUL LIFE :	7YR/5000HRS		
APPLICATION :	CONSTANT SPEED AUXILIARY		
CONTACT :	KUBOTA FOR FUEL SETTING. 11H910-1		

Prestolite **Leece-Neville**

MODEL 8RG2031 B

AMPS 5 VOLTS 12 201122

SALES NO. 105-245

MANUFACTURED IN USA

BY PRESTOLITE ELECTRIC, INC.