

# GB602 - Detroit Diesel

STATUS

På lager

REF. NR.

GB602

MANUFACTURE

Detroit Diesel

TYPE

DD-5111V

RED.

3,92:1

FABRIKS NR.

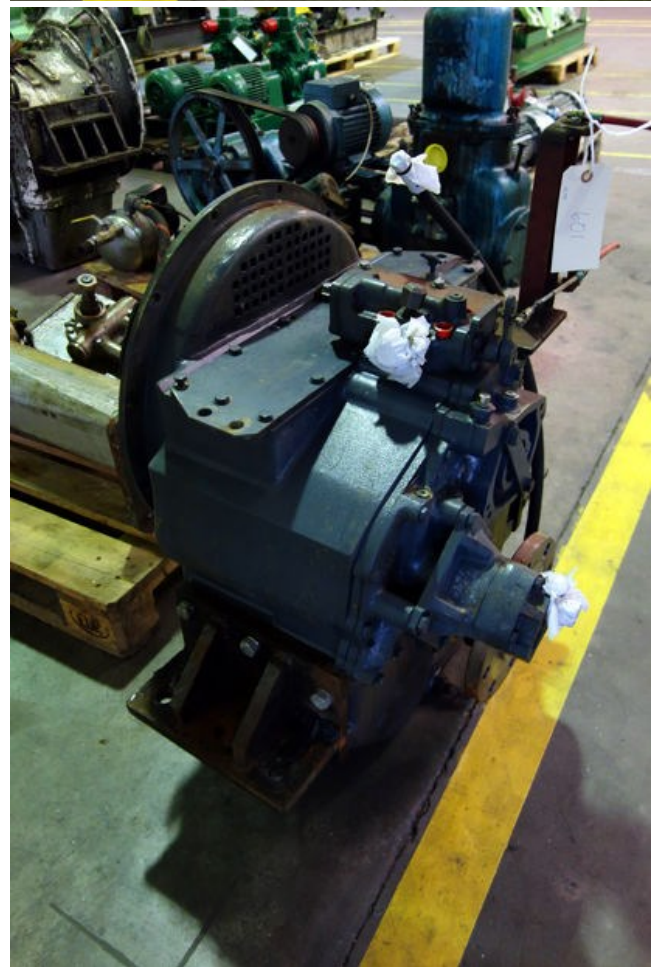
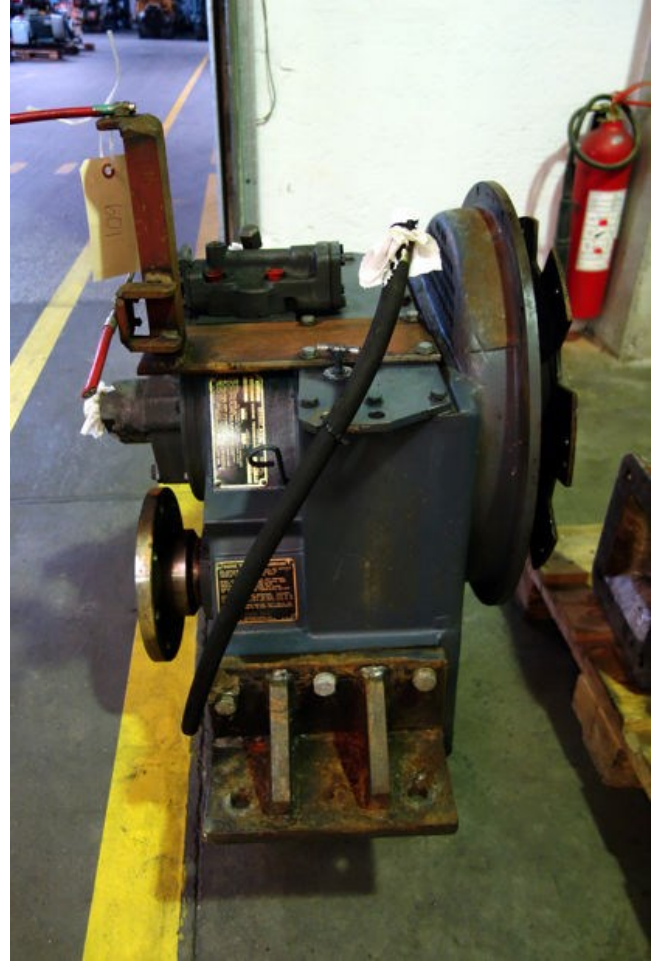
Serie nr. 5EJ311 Bom 39045

REMARKS

Valve missing, (Twin Disc)







SERIAL NO. 30045	<b>DETROIT DIESEL</b>	MOUNTING BOLT THREADS ARE RWD
MODEL NO. C-115	COMPLETION <b>MARINE TRANSMISSION</b>	CUSTOMER 239201
BOM #	OIL CAPACITY 5.7 GAL	RATIO 3.0
	MAXIMUM OIL PRESSURE (CALCULATED) 125 P.S.I.	

**LUBRICATION:** (BILL OF MATERIAL NO. MUST BE GIVEN WHEN ORDERING PARTS)  
**EVERY 10 SERVICE HOURS OR DAILY:** CHECK OIL LEVEL WITH ENGINE RUNNING AND MARINE TRANSMISSION IN NEUTRAL.  
**EVERY 100 HOURS OR WHEN BOAT IS DOCKED:** LUBRICATE COUNTERSHAFT SHAFT WITH WATER PUMP GREASE TO PREVENT SILGE WATER ENTERING HOUSING, IF APPLICABLE.  
**EVERY 1000 SERVICE HOURS OR 6 MONTHS, WHICHEVER COMES FIRST:** DRAIN AND REFILL HOUSING WITH CLEAN OIL; CLEAN HOUSING SCREEN.  
**IMPORTANT: WARRANTY IS VOID UNLESS TRANSMISSION IS LUBRICATED AND MAINTAINED AS SPECIFIED IN THE SERVICE MANUAL AVAILABLE ON REQUEST; REFER TO "MARINE TRANSMISSION LUBRICANT" PLATE SHIPPED WITH UNIT.**

MADE IN BELGIUM      MANUFACTURED FOR DETROIT DIESEL CORP.      HJ37  
BY TWIN DISC INCORPORATED