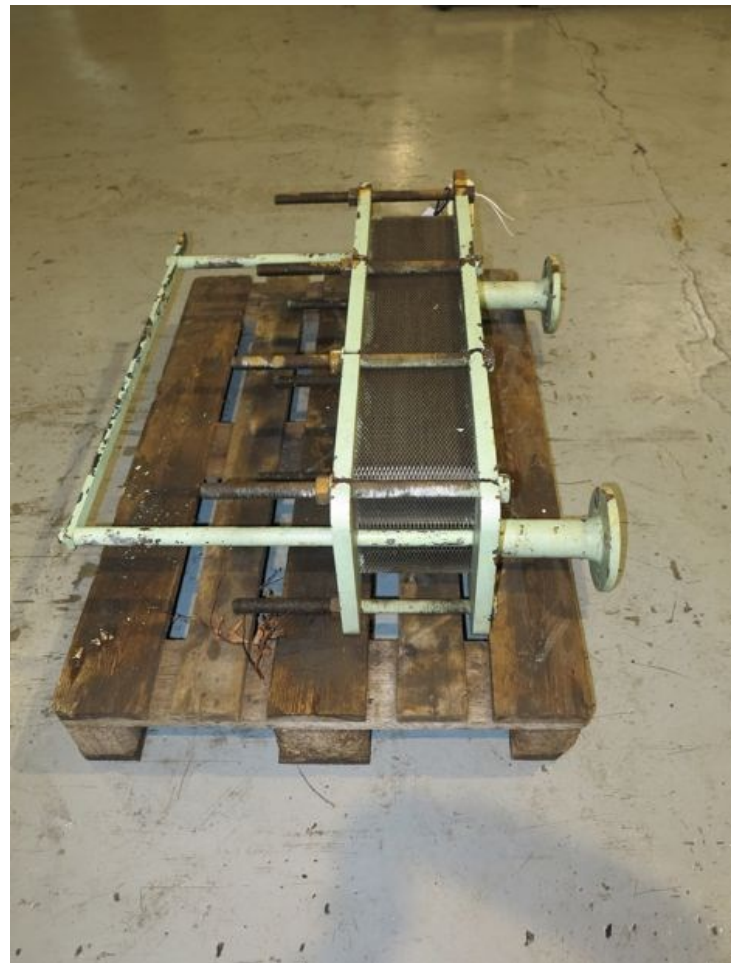


HE212 - Sondex

| | |
|-----------------------------|-------------------|
| STATUS | På lager |
| REF. NR. | HE212 |
| PLATE/TUBE | Plate |
| MANUFACTURE | Sondex |
| TYPE | S15-IG |
| SERIAL NO. | 21269 |
| YEAR | 2001 |
| SURFACE M2 | 8,25 |
| WORKING PRESS/TEMP | 6 bar |
| DIM. (L*W*H) CM (PLADE MÅL) | 95*30*22 |
| REMARKS | Ex. Maersk Helper |



SONDEX A/S

PLATE HEAT EXCHANGER TYPE SLJ.G.

MANUFACTURING NO. 21269

NOMINAL CAPACITY kW 150

TRANSMISSIONS SURFACE M² 8,25

ASSEMBLING MEASURE MIN. M 165

MAX. WORKING PRESSURE Bar 6 / 6

VOLUME IN LTR PRODUCT SIDE 9,5

WORKING TEMP. MIN. C° 0

YEAR 2001

L.H. 4201

M. 8,25

PRODUCT SIDE IN M. 8 / 8

MAX. TEST PRESS. M. RE. Bar 8 / 8

VOLUME IN LTR MILD SIDE 9,5

WORKING TEMP. MAX. C° 150



IMPORTANT:

If the plate is damaged or worn, it must be replaced immediately. Do not use the exchanger until it is repaired. The manufacturer is not responsible for any damage caused by the user. The manufacturer is not responsible for any damage caused by the user. The manufacturer is not responsible for any damage caused by the user.

SONDEX A/S DK-6000 KOLDING DENMARK

ING. PER GJERDRUM A/S
N-1395 Hvalstad-Norway

Pump type

Prod. No. Year

PG-order No. 20070781

Cap. m³/h bar

rpm kW

