

STATUS

På lager

REF. NR.

HP4

PUMP MANUFACTURE

Oilgear

PUMP TYPE

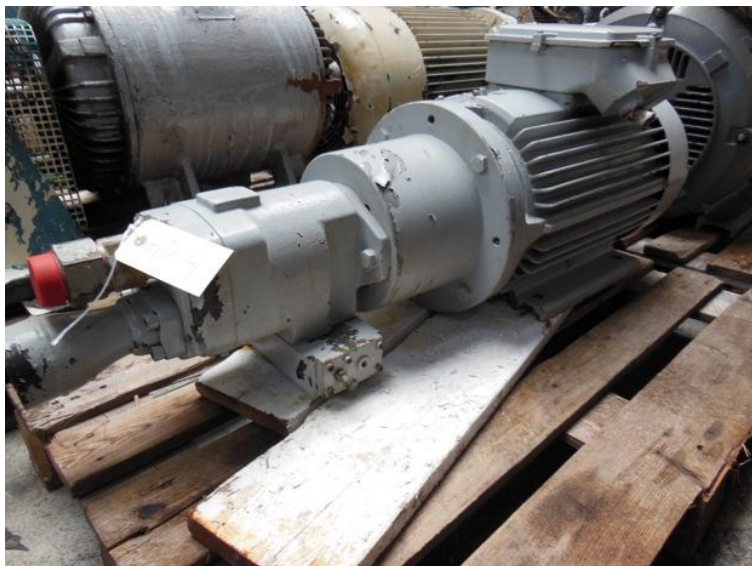
PVWH34RSAYCNNN

PUMP PRESSURE (BAR)

241,4

PUMP FLOW (LITER/MIN.)

127,7





LONNIE		ELECTRIC MOTORS	
SYNCHR. MOT. 3~	TYP	F1801D4	
IP55	IM1001	No	22142
22	kW	30	HP
50	V	50	Hz
70/40,5	A	cos φ	0,87
1480	min	Mmax/Mn	
M/30°C	ISOL	F	200 kg
		92	4800 V

