

STATUS

På lager

REF. NR.

HP8

PUMP MANUFACTURE

Hägglunds Denison

PUMP TYPE

T6DCCM B35 B25 B25 B100

PUMP PRESSURE (BAR)

240

PUMP FLOW (LITER/MIN.)

166,6

MOTOR MANUFACTURE

Dutchi Motors DM 280 S4

MOTOR KW

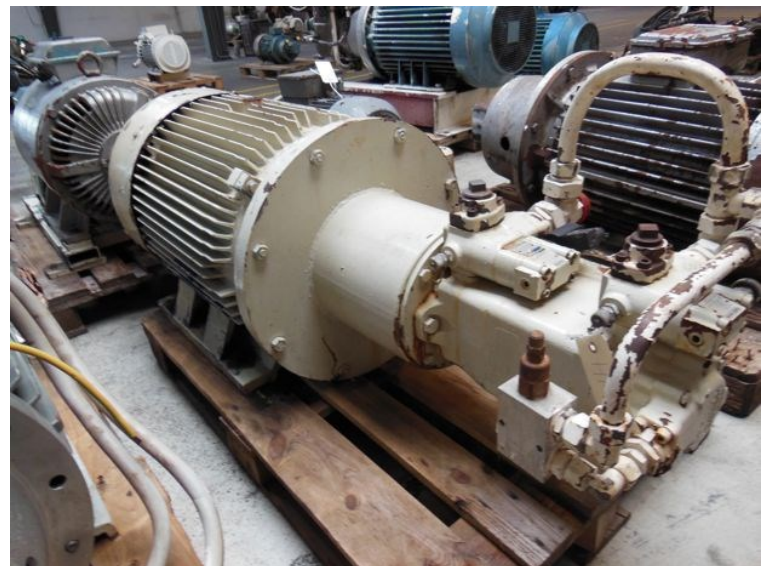
70

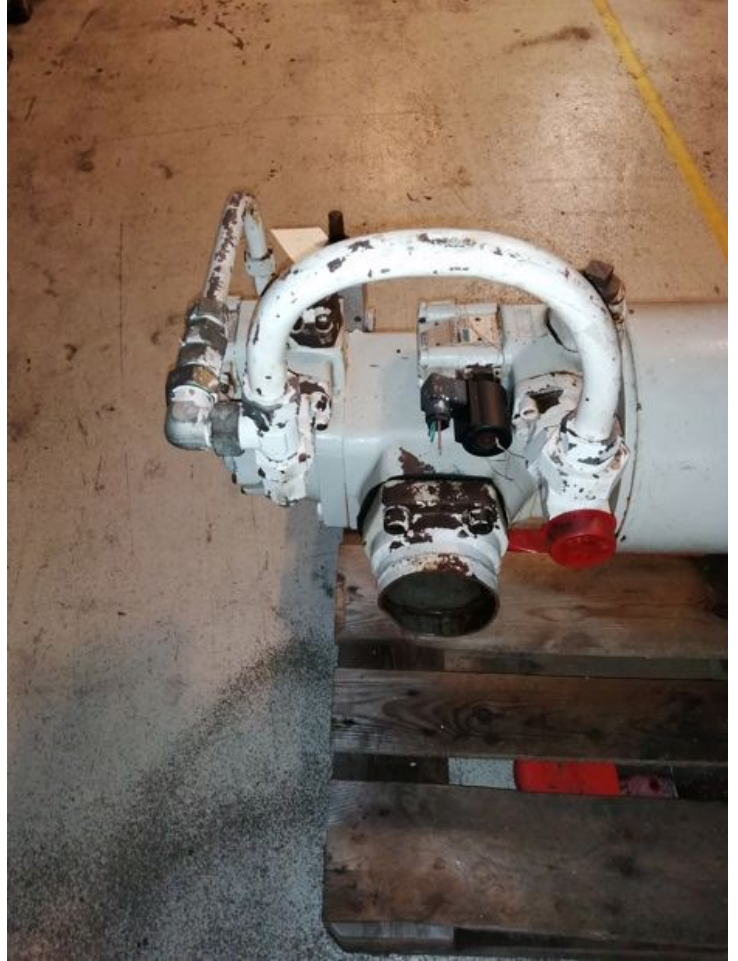
MOTOR VOLT

380

MOTOR RPM

1480





Quality of high class

3084	IP 54	SI
KW	1.0	A INS. CL. F
MIN.	1150 RPM	HZ
BEARING NO.		
3 PHASE INDUCTION MOTO.		
VDE 0530 IEC/DIN		