

Detroit - Model 6055-C

STATUS

På lager

REF. NR.

M2435

MANUFACTURE

Detroit

TYPE

Model 6055-C

ENGINE NO.

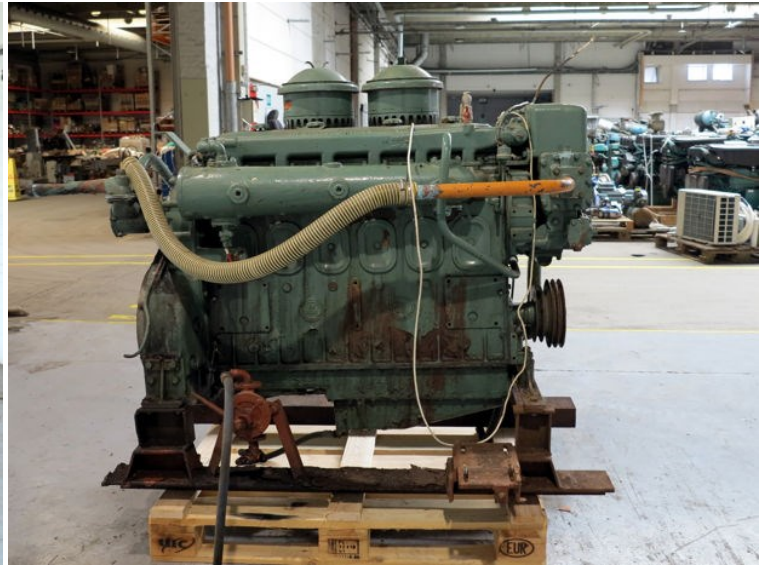
6A-133441

RPM

1940

REMARKS

(6 cyl)





OPTIONS		EQUIPMENT		EQUIPMENT	
		TYPE		TYPE	
DETROIT DIESEL ENGINE DIVISION DETROIT, MICHIGAN U.S.A.		2E	VALVE LIFT ADJ.	14D	4L
MODEL	6055-C	2D	DEFLECTOR		5C9
UNIT NO.	8A-122441	2F	CRIGHT. CYL.		8
MAX. RPM NO LOAD	1940	5D	VAL. SCRN.		11
RATED HP	AT	8	FUEL FILTER		77
CONT. HP	AT	8	THROTTLE CONT.		141
		9	RAIN. OREG. GIP.		152
		12	24V. DIESEL		