

STATUS

Available

REF. NUMBER

G1584

ENGINE

Isuzu 6BD 1PV

GENERATOR

Stamford

HZ

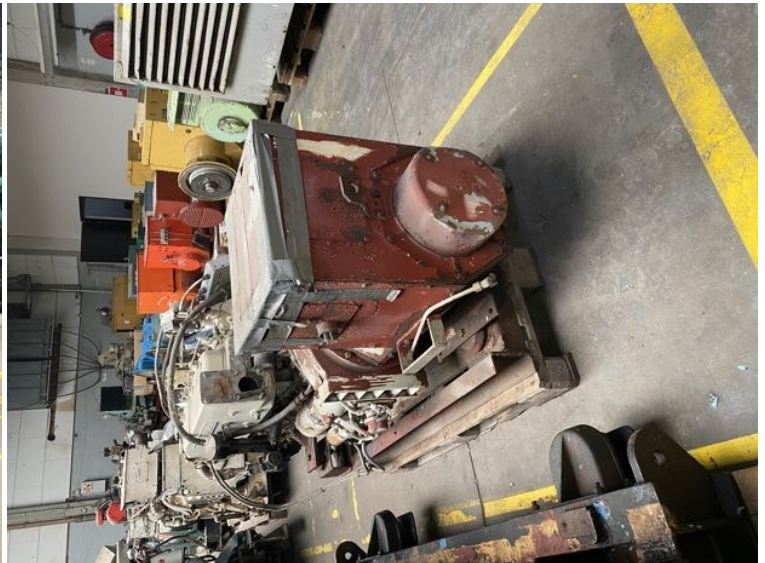
50

VOLT

230

KVA

57,5



DATE 15/03/2015 SERIAL No. C06082700

PKV	13.81	KVA	57.25	Hz	50	PHASE	3
PF	0.8	RPM	1500	STATOR WDG	210		
VOLTS	230	AMPS	272.9	STATOR CON	8700		
RATING	50MT	AMBIENT TEMP	25 °C	ENCLOSURE	IP23		
EXCITATION VOLTS	54	AMPS	1.9	INSULATION CLASS			

450-14935

WARNING REFER TO INSTRUCTION BOOK BEFORE PLASH OR MEGGER TESTING

**STAMFORD**  
AN ALTERNATOR FROM  
NEWAGE INTERNATIONAL

BS5000  
NEMA MG1-22  
IEC 34-1

MADE IN ENGLAND FOR NEWAGE NORGE, OSLO