

**STATUS**

Available

**REF. NUMBER**

G1683

**MANUFACTURE**

Valmet

**ENGINE**

Valmet 420 DSG Nr. C1574 Nordhavn: M1922 Årg. 1993

**GENERATOR**

DAE Type GA4545

**VOLT**

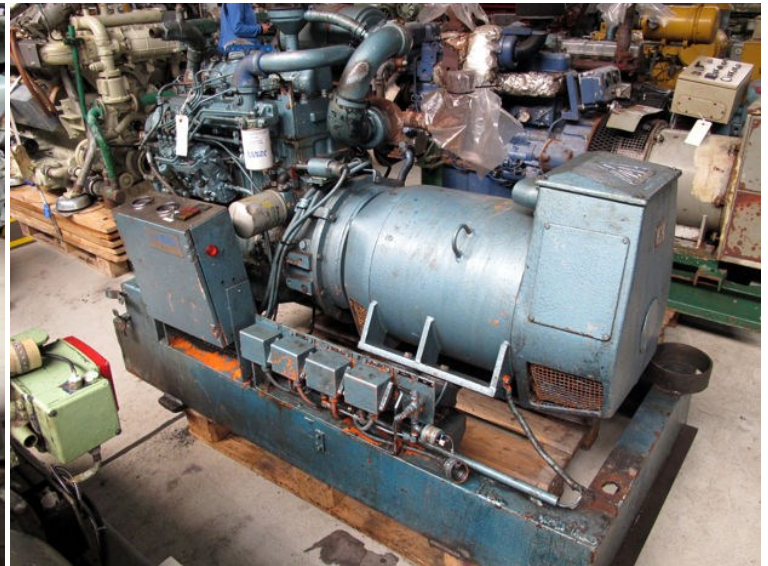
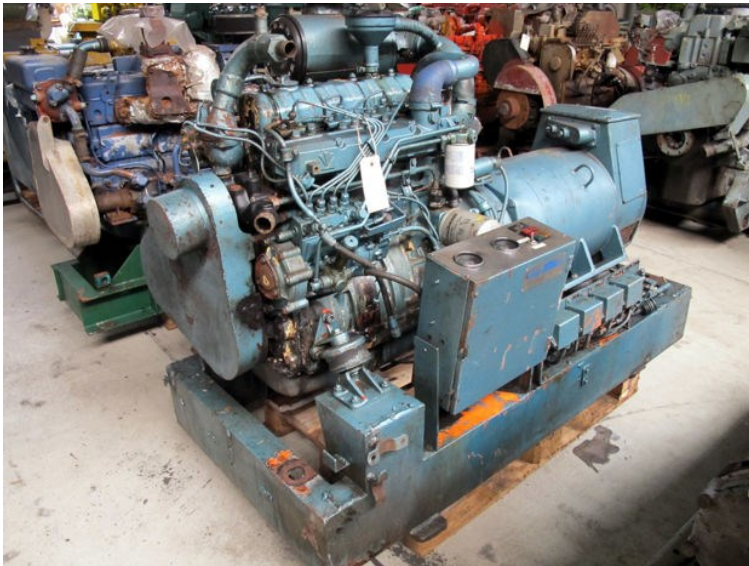
380

**KVA**

55

**REMARKS**

65.457 hours



SELF-REGULATING ALTERNATOR  
Radio interference suppressed

Type	GA 45 45	No.	425195		
kVA	55	Rating	CONT		
kW		r/min	1500		
V	380	A	83,7		
~	50	Phases	3	cos φ	0,8
Volts to neutral	220	Class	F F		

Made by **DANSK ELEKTROMOTOR LAGER**