

STATUS

Available

REF. NUMBER

G1863

ENGINE

Detroit 8V71 7084-7002

GENERATOR

Leroy Somer LSAM 46.2L6 C 6/4

VOLT

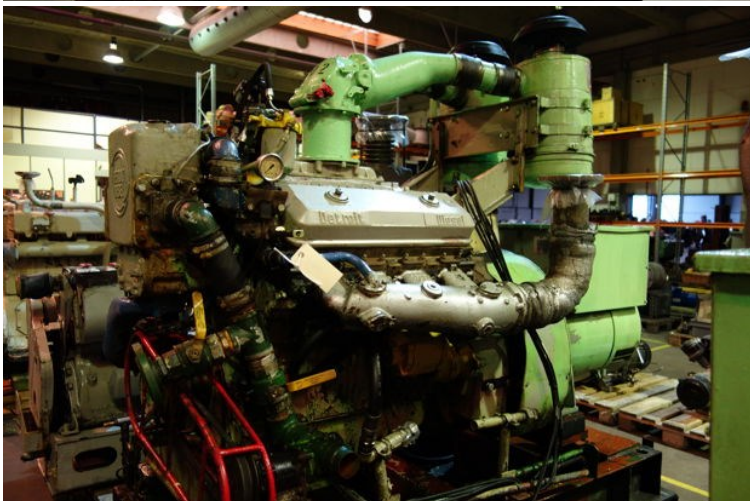
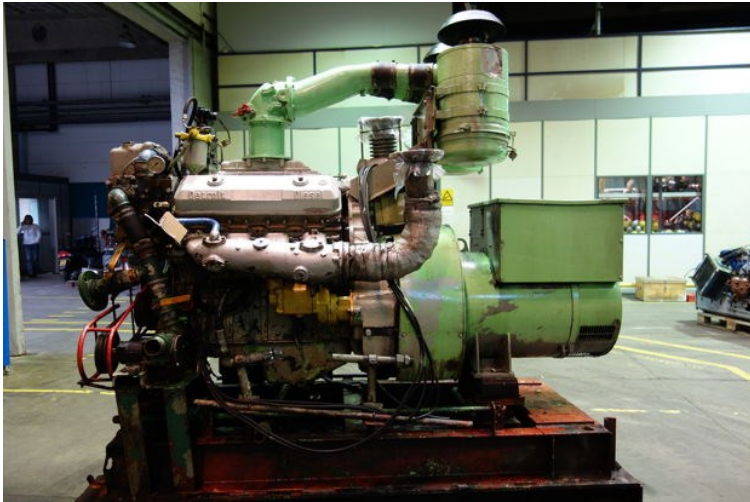
440

KVA

250

HZ

60





**PARTNER**

**ALTERNATORS**

LSAM 46.2L6 C 6/4		IP23
No. 254362 / 1	Date	2011/16
1800 r.p.m.	50 Hz	Weight 710 kg
PF 0.80	Th. Class. H	Altitude < 1000m
A.V.R.	44B/450	Excit. ARFP
Cool. system	full load	27,70 V / 3,16 A
	at no load	0.80 A
B.E. bearing		
B.B.E. bearing	6915 2RS C2	

RATINGS		
Voltage	UD	V
Phase	3	
Conn.	D	
Conn.	260	kVA
EN	200	kW
40°C	328	A
Std by		kVA
75°		kW
27°C		A

IEC 60034-1 & 5 NEMA MG1-32 & 33

www.leroy-somer.com

1.025.002 a

Made in Europe by Leroy-Somer