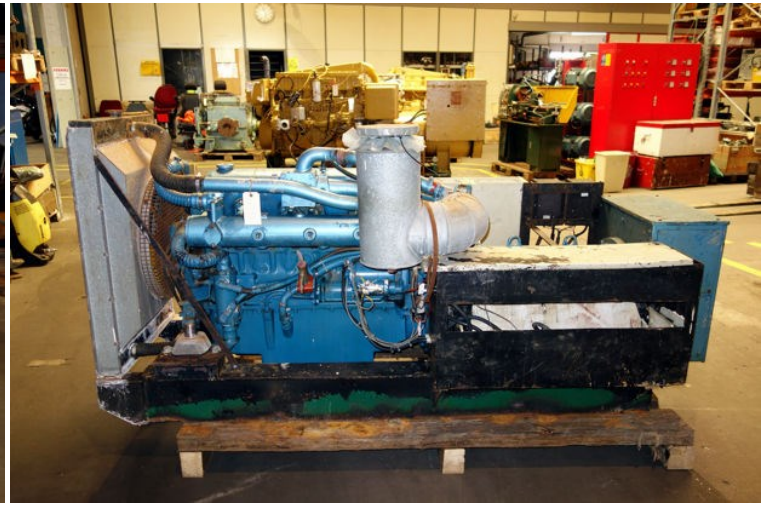


STATUS	Available
REF. NUMBER	G1933
MANUFACTURE	Ford
ENGINE	Ford 2726T Serie no. E7201/4
GENERATOR	Leroy Somer LSA445VI11
VOLT	380
KVA	125
HZ	50
VESSEL	Baltic News
REMARKS	Engine details: Ford / Ford Lehman engine, 6 cyl. in line turbo charged engine. 5,95 liter Dry weight: 691 kg



# Factsheet:

This super turbo charged engine promises you 185 bhp in every day use at 2500 revs! And you can enjoy all the other benefits of Lehman Power: in this six cylinder water cooled engine; more power for less fuel, a quieter engine, longer life and fewer, shorter services.



## The Technical Facts

### Full Specification

**TYPE**  
6 cylinders in line, 4 cycle overhead valve diesel engine.  
Turbo charged.

**BORE/STROKE**  
4.125 ins x 4.524 ins: 105 x 115 mm.

**DISPLACEMENT**  
363 cu ins: 5.95 liters.

**GROSS POWER**  
Super 185 – 185 bhp at 2500 rpm.

**COMPRESSION RATIO**  
14.7 : 1.

**FUEL**  
ASTM D975 Class 2 D or BS2869 Class A1.

**OIL CAPACITY**  
23.5 US quarts: 22.0 liters (initial fill).

**OIL FILTER**  
Full flow, disposable cartridge, spin on.

**FUEL SYSTEM**  
In line fuel injection pump, engine oil lubricated, with mechanical governor and flexible braided fuel supply line.

**ELECTRICAL SYSTEM**  
12 volt negative ground with stop solenoid, 24 volt negative ground and insulated return 12 or 24 volt, are also available at extra cost.

**STARTING MOTOR**  
12 volt electrical solenoid, 24 volt also available at extra cost.

**ALTERNATOR**  
70 amp with voltage regulator.

**RAW WATER COOLING SYSTEM**  
A copper or cupro-nickel option heat exchanger with zinc anti-corrosion pencil.

**RAW WATER PUMP**  
Gear driven high flow rubber impeller type.

**FRESH WATER COOLING SYSTEM**  
Pressurized fresh water circuit for engine and exhaust manifold.

**FRESH WATER CAPACITY**  
24.3 US quarts: 23.0 liters.

**ENGINE MOUNTINGS**  
In line, adjustable high grade anti-vibration mounts – see price list.

**MAXIMUM INSTALLATION ANGLE**  
15° rear down, 4° front down.

**DRY WEIGHT LESS TRANSMISSION**  
1524 lbs: 691 kg.

**EXHAUST OUTLET**  
4 in exhaust elbow.

**TRANSMISSIONS**  
Twin Disc, PRIM – others available on request.

**FINISH**  
Lehman Red with chrome rocker box, and filler caps.

**APPROVAL STANDARDS**  
Lloyds, RINA, DNV, ABS JCI and others are available.