

STATUS

Available

REF. NUMBER

G2138

ENGINE

Cummins 6B5.9-M Serial No. 21068793

GENERATOR

Leroy Somer LSA44M2 Serial 29646/01

VOLT

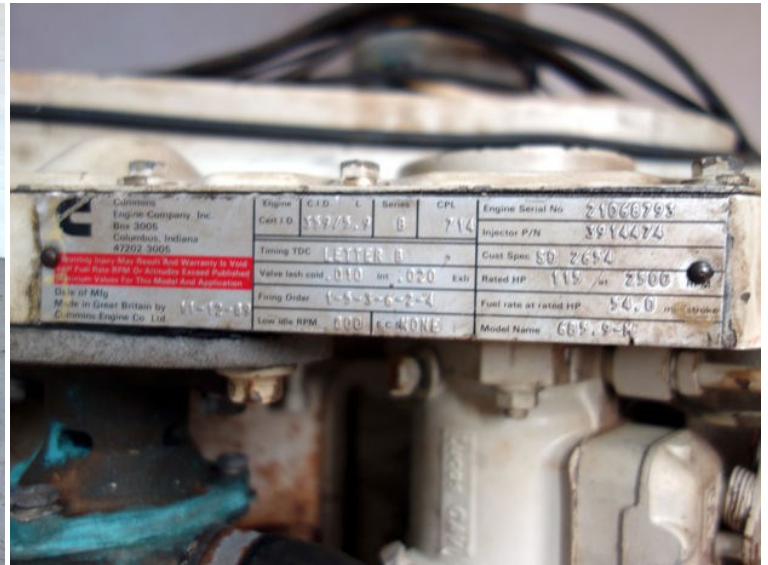
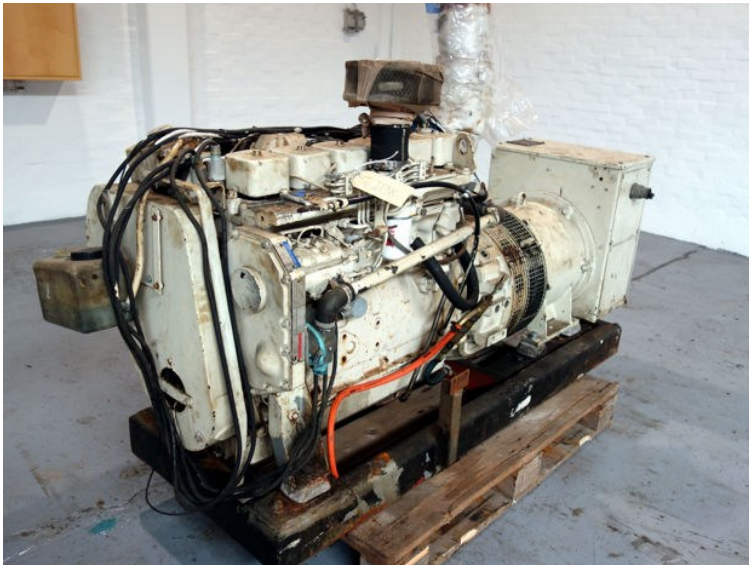
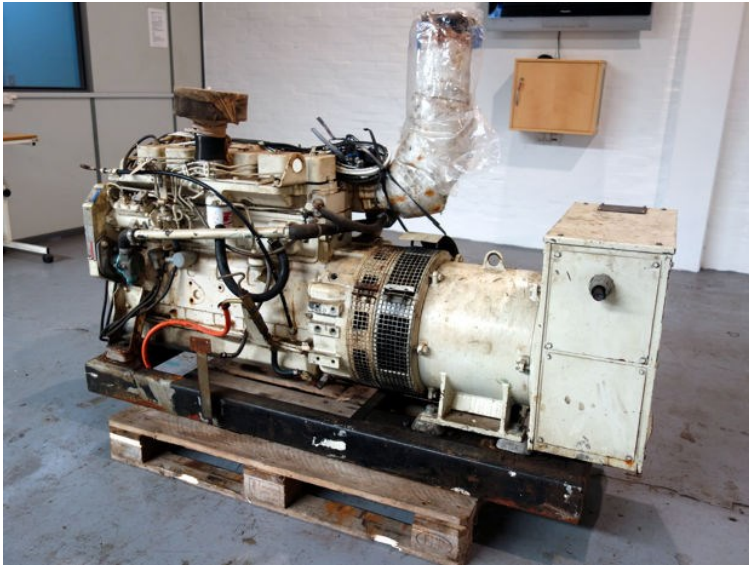
230

KVA

68

HZ

50



Conforme à C.E.I 34-1 According to I.E.C 34-1

Type	4432	AGTM	Bobinage	18	6	file	N	20646/04
Puissance de base	service continue	500.4	AV	68	AVM	180.7	Amh	45
Rating	50 Hz	230	V	Phase	6	Connection	C	1500
	cos φ	0.66	classe d'isolation	F/H	rendement	88.7		100 mm
	service continue	37	V	2.5	A	a vide	0.7	A
Date	03/90	Masse	310	kg	Altitude	<	1000	m
RN AV DE BRG	6910-ZRS/03	Periodicite de graissage		Grease every				
RIE AS	6910-ZRS/03	avec		with				
NDE BRG	6910-ZRS/03	IP	26	Regulateur	RS12BA3			
Life fabricated	X	duree de vie		life				

PARTNER
ALTERNATEURS.
ALTERNATORS

LERROY SOMER
MADE IN FRANCE

1.072.537