

STATUS

Available

REF. NUMBER

G2213

ENGINE

Mitsubishi 6D14T Year 1997 MHI Equipment No. 832877

GENERATOR

Stamford UCM 274D2

HZ

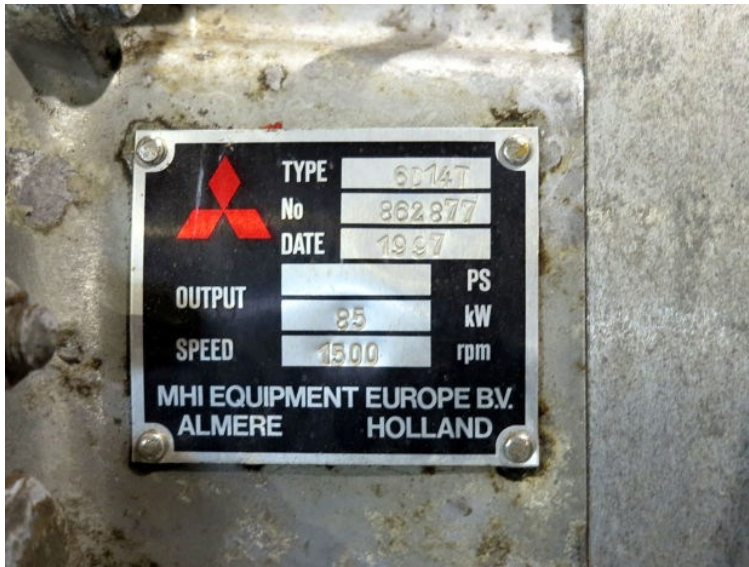
50

VOLT

230

KVA

97





TYPE	UGM74D2	MANUFACTURED MTH/YR	03/97				
AVR	HYG41	SERIAL No	100010701				
PF	0.8	KVA	50	Hz	50	PHASE	3
VOLTS	230	RPM	1500	STATOR WDG	477		
RATING	6007	AMPS	213.3	STATOR CON	3577		
EXCITATION VOLTS	44	AMBIENT TEMP	40 °C	ENCLOSURE	176		
		AMPS	7.5	INSULATION CLASS	1		

WARNING REFER TO INSTRUCTION BOOK BEFORE FLASH OR MEGGER TESTING

STAMFORD
AC GENERATORS FROM
NEWAGE INTERNATIONAL

BS5000
NEMA MG1-22
IEC 34-1

450-14946

NEWAGE INTERNATIONAL LIMITED PO BOX 10000 WICK ROAD STAMFORD LINCOLNSHIRE PE9 7NB ENGLAND

