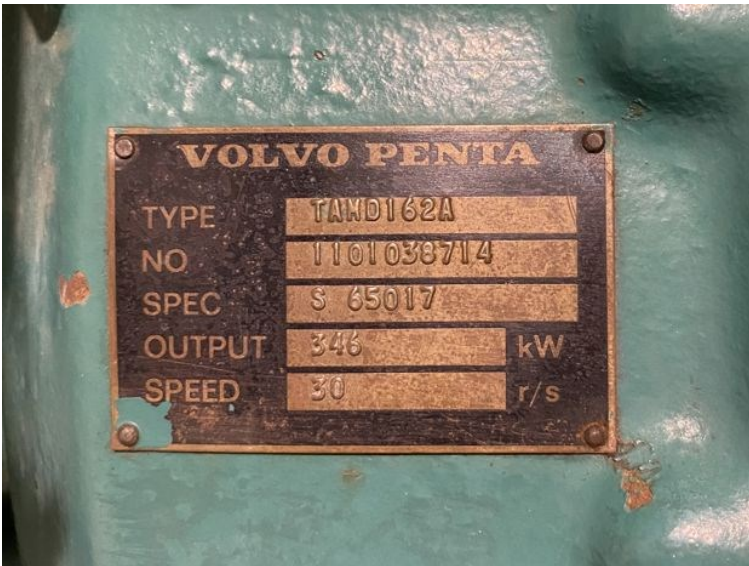
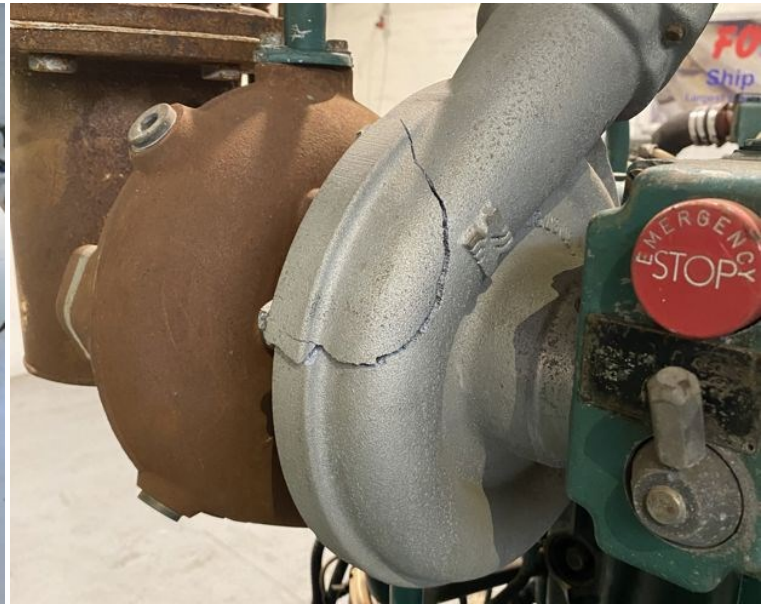


G2351 - Volvo Penta

STATUS	Available
REF. NUMBER	G2351
MANUFACTURE	Volvo Penta
ENGINE	Volvo Penta TAMD 162A. Spec S 65017. No. 1101038714 . Output 346 kW. Speed 30 r/s
GENERATOR	Stamford MHC534C2. 1800 rpm
VOLT	440
KVA	408
HZ	60
REMARKS	Turbo damage





VOLVO PENTA

TYPE	TAND162A
NO	1101038714
SPEC	S 65017
OUTPUT	346 kW
SPEED	30 r/s



103/30

1101038714	300	60	3
1101038714	300	60	3
0.9	1900		311
440	335		STAR
CONT	43		1P29
40	1.80		H

WARNING

MADE IN ENGLAND