

G2358 - Valmet

STATUS

Available

REF. NUMBER

G2358

MANUFACTURE

Valmet

ENGINE

Valmet 620DSR(M)G

GENERATOR

Stamford UCM274E1

VOLT

440

KVA

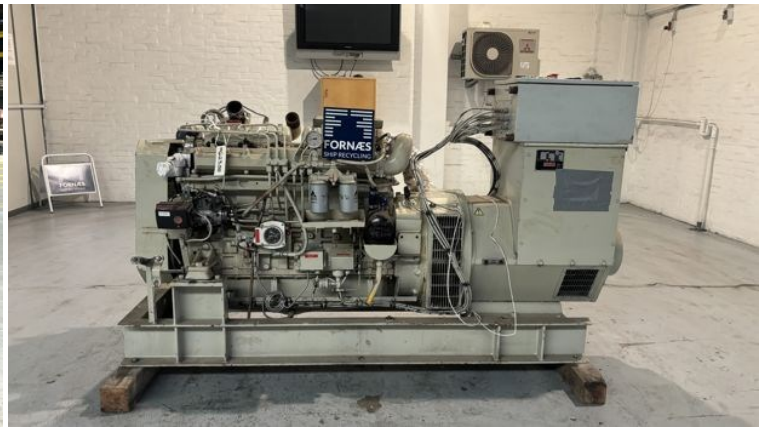
137

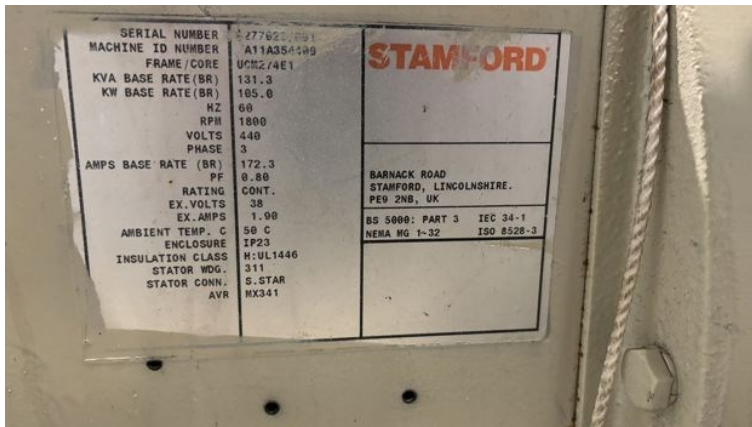
HZ

60

REMARKS

Hours on hour counter: 55.560





PRODUKTIONSLISTE FOR TAVLER Side 1 af 2

| | | | | | | | |
|---------------|-------------------|------------|------------|---------------------|-------------|---------|---------|
| ORDRE NR: | 6032 | DATE: | 21-02-2011 | LEV DATE: | UGE 8/11 | ANTAL: | 1 |
| KUNDE: | SR-ANLÆG S981072 | UDFØRELSE: | SM-MAN | | | | |
| KVA: | 137 | KW: | 110 | VOLT: | 3x440/230 V | HZ: | 60 |
| BAT.SP: | 24Vdc | | | | | | |
| DIAGRAM: | 4988 6SIDER | 5030 | | | | | |
| UDSKREVET AF: | OH | TIL: | | MONTØR: | | FÆRDIG: | |
| MOTOR: | VALMET 620DSR(M)G | | | STAMFORD UCM 274 E1 | | TEKST: | ENGELSK |

Udskr Brugt

| Stk. | Stk. | Vare | Type | Måleområde | Lev.-td. | å kr. | Indkøb Kr. |
|------|------|----------------------------------|------|------------|-----------------|-------|------------|
| 1 | 1 | HIMEL MSYCRN 54/200 +MM 54 Brugt | | 54/250 | OMG | | 0 |
| 1 | 1 | SELCO M1000-0080 | | 12-24 Vdc | P1 | L | 0 |
| 1 | 1 | MANOMETER 0-10 BAR | | | 350 040 004 | L | 0 |
| 1 | 1 | GEBER M10x1 2 POL | | | 360 081 032 003 | L | 0 |
| 1 | 1 | MANOMETER 0-5 BAR | | | 350 040 003 | L | 0 |
| 1 | 1 | GEBER M10x1 2 POL | | | 360 081 032 002 | L | 0 |
| 1 | 1 | TERMOMETER 40-120 C | | | 310 040 002 | L | 0 |
| 1 | 1 | GEBER M14x1,5 2POL | | | 323 805 001 001 | L | 0 |
| 1 | 1 | OMSKIFTER CG 8 A 222 E | | 1 ELLER 2 | A1 | OMG | 0 |