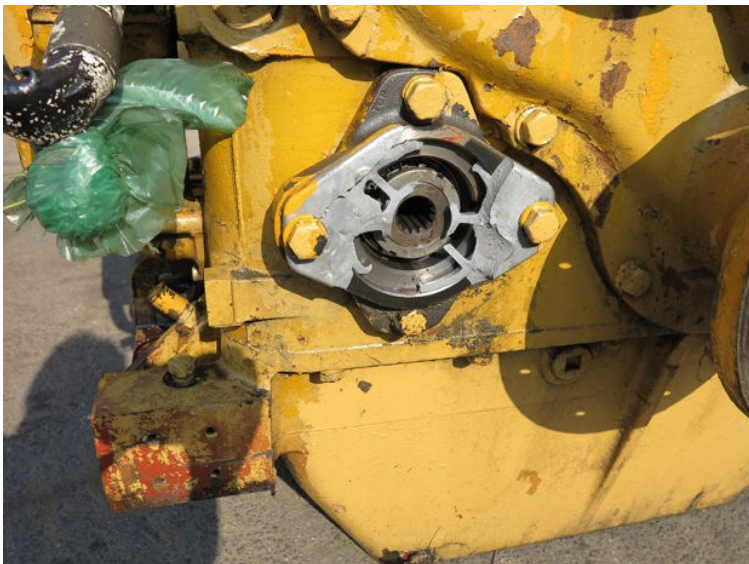


GB717 - Caterpillar

STATUS	Available
REF. NUMBER	GB717
MANUFACTURE	Caterpillar
TYPE	7241
RED.	4,5:1
HP IND	1400
RPM IND	1125
FABRIKS NR.	36W305
VESSEL	Vos Siren
REMARKS	Oilpump missing (broken)



CATERPILLAR

REG. U.S. PAT. OFF.

MARINE REVERSE AND REDUCTION GEAR

MODEL NO.	SERIAL NO.	RATIO	Oil CAP.	RATING	SHAFT	SEAL
77F	101405	4.2:1	3 GALS.	CONT.	1.000	

GIVE MODEL NUMBER AND SERIAL NUMBER WHEN ORDERING PARTS

LUBRICATION

EVERY 10 SERVICE HOURS: CHECK OIL LEVEL IN GEAR COMPARTMENT. OIL SHOULD BE UP TO THE FOLD MARK ON THE GAUGE WITH ENGINE RUNNING AND CLUTCH ENGAGED.

EVERY 125 SERVICE HOURS OR WHEN VESSEL IS DOCKED: LUBRICATE OUTPUT SHAFT SEAL WITH WATER INSOLUBLE WATER BUMP GREASE AND REMOVE AND CLEAN THE WEATHER-STRIP HOUSING WITH SAE 30-WT. CRANKCASE LUBRICATING OIL. REMOVE AND REPLACE FILTER ELEMENT AT EACH OIL CHANGE.

MANUFACTURED BY
CATERPILLAR TRACTOR CO.
PEORIA, ILLINOIS
MADE IN U.S.A.

4L4233