

GB790 - Twin Disc

STATUS

Available

REF. NUMBER

GB790

MANUFACTURE

Twin Disc

TYPE

MG 509

RED.

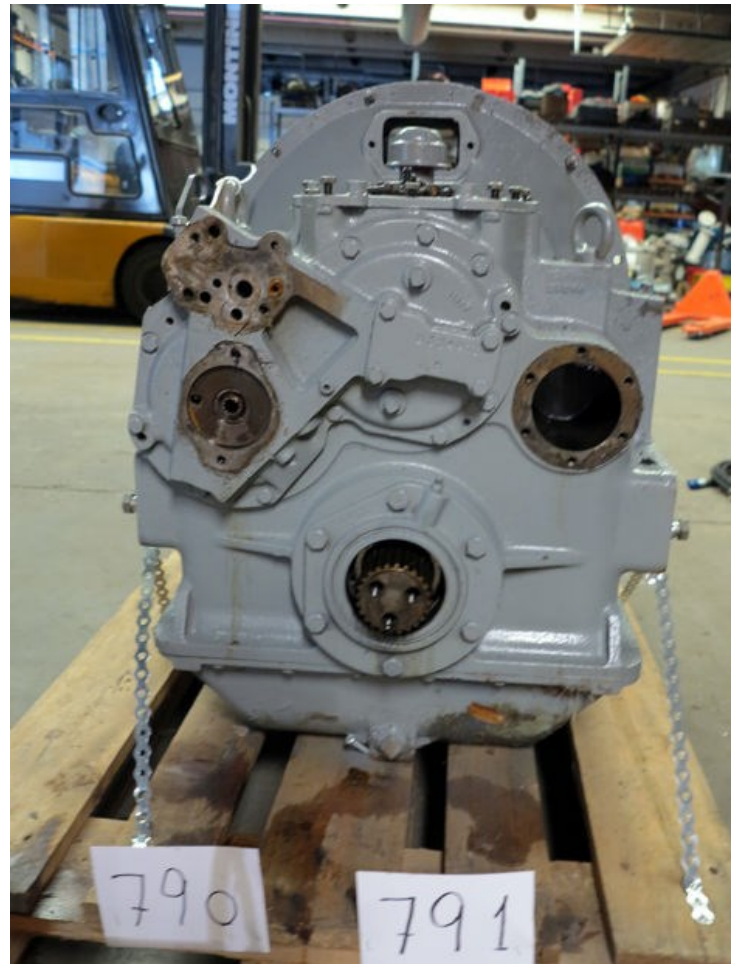
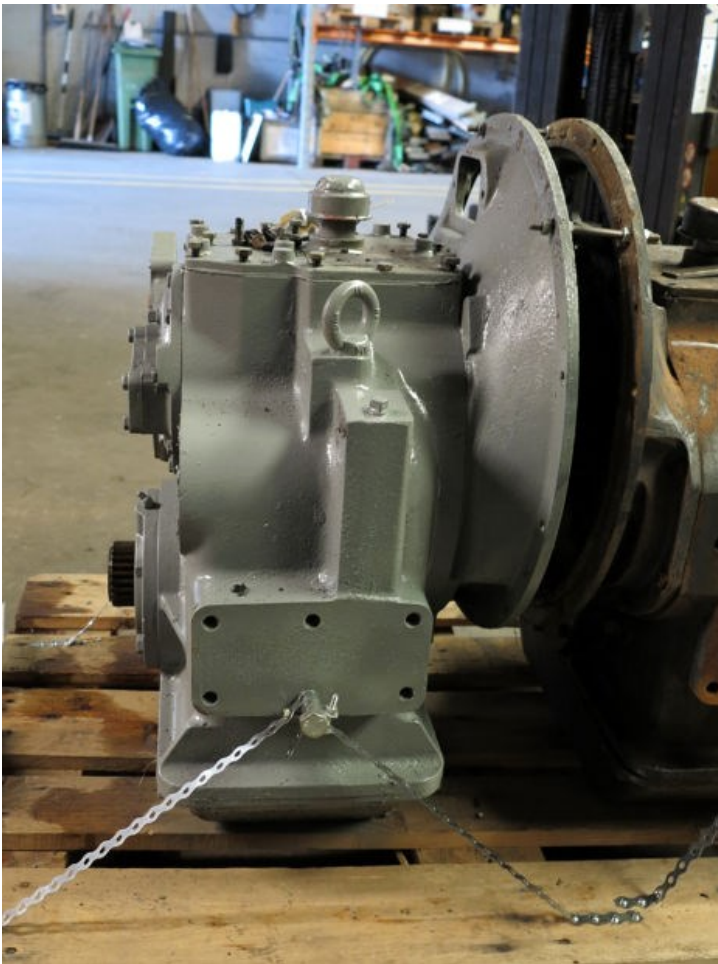
4,5:1

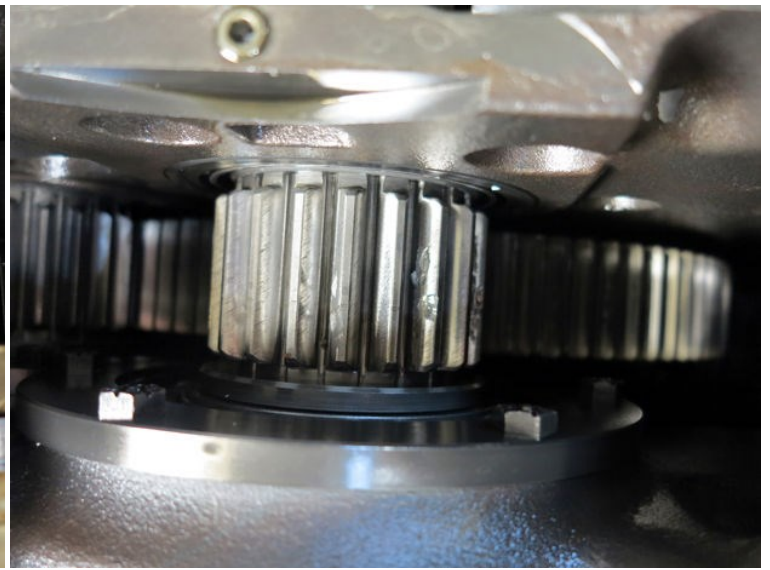
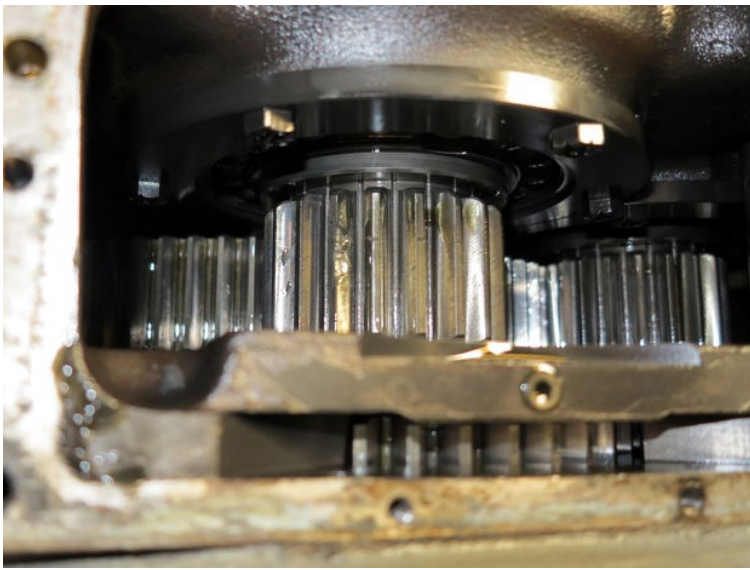
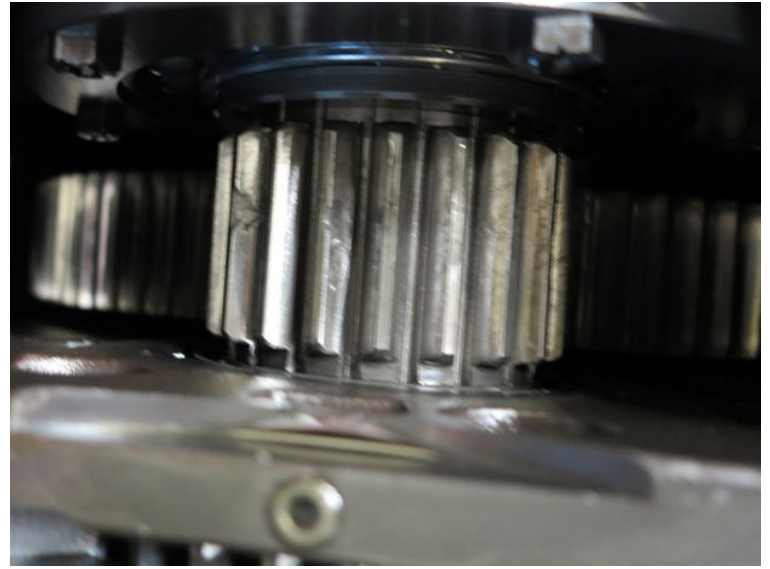
FABRIKS NR.

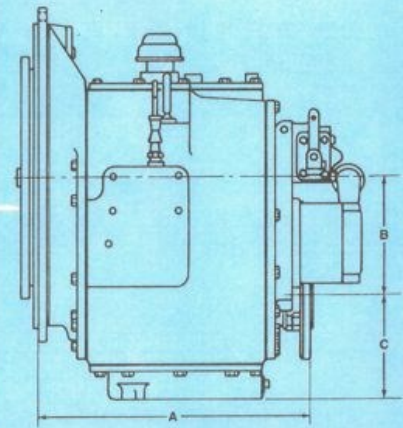
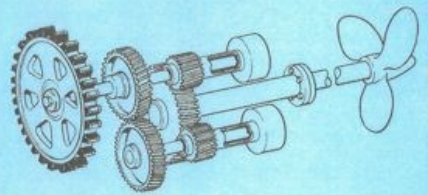
Serie 5N2199 Spec. 36769

REMARKS

For parts







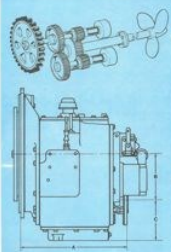
Use Certified Print for Installation

DWG. NO.	RATIOS	A SAE No. 1	SAE No. 2	B	C	APPROX. DRY WGT.
X9816-F	1.45-1	396.7 mm (15.62")	419.6 mm (16.52")	173.2 mm (6.82")	148.6 mm (5.85")	259 kg (570 lbs)
	2.00-1					
	2.48-1					
	2.95-1					
X9835	3.39-1	441.5 mm (17.38")	464.3 mm (18.28")	241.0 mm (9.49")	238.8 mm (9.40")	327 kg (720 lbs)
	3.83-1					
	4.50-1					

**Model MG-509
Marine Transmission**



- Oil controlled clutch engagement
- Carburized and hardened gears
- Emergency come-home feature
- Built with lifetime lubrication
- Rubber block drive
- Ratios: 1.45-1, 2.00-1, 2.48-1, 2.95-1, 3.39-1, 3.83-1, 4.50-1
- Equipped with either SAE No. 1 or No. 2 housing
- Dry flywheel housing
- Both clutches removable with transmission attached to engine
- Superior performance and ratios forward or reverse
- Hydraulically-actuated and oil-cooled clutches shift with smooth, fast, fingertip response

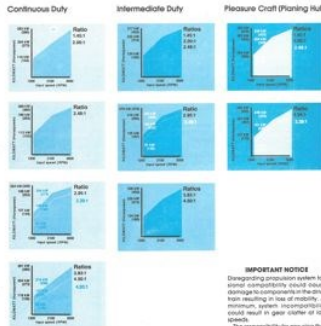


Use Certified Print for Installation

DWG. NO.	RATIOS	A SAE No. 1	SAE No. 2	B	C	APPROX. DRY WGT.
X9816-F	1.45-1	396.7 mm (15.62")	419.6 mm (16.52")	173.2 mm (6.82")	148.6 mm (5.85")	259 kg (570 lbs)
	2.00-1					
	2.48-1					
	2.95-1					
X9835	3.39-1	441.5 mm (17.38")	464.3 mm (18.28")	241.0 mm (9.49")	238.8 mm (9.40")	327 kg (720 lbs)
	3.83-1					
	4.50-1					

Rolling valve is applicable to both right-hand and left-hand rotation engines turning either right-hand or left-hand propellers. The transmission may be purchased with an SAE No. 1 or No. 2 housing.

Heat Exchanger
Kits available from Twin Disc consist of a heat exchanger with flexible hoses and necessary fittings for installation on the top cover plate of the transmission. Customers who wish to furnish their own heat exchanger should contact the nearest Twin Disc or marine engine distributor. When ordering, specify flow or heat water to be used in the heat exchanger. Heat exchanger can be remotely-mounted if a top PTO is used.



IMPORTANT NOTICE

Downgrading performance when torsional compatibility is not used may damage the transmission or the shaft. It is recommended that the torsional compatibility of the shaft and driven equipment be checked. Torsional compatibility can be checked by the engine builder, marine surveyor, independent consultant and others. Twin Disc is not responsible for any damage caused by torsional compatibility problems that result in gear failure of the shaft.

For Service Classification Definitions see back cover.

**Model MG-509
Marine Transmission**

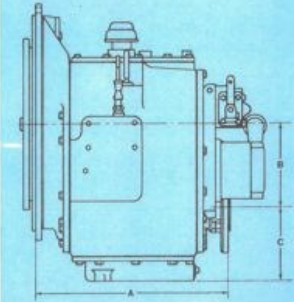
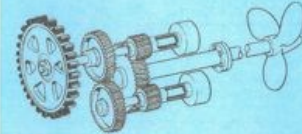


- Oil controlled clutch engagement
- Carburized and hardened gears
- Emergency come-home feature
- Built with lifetime lubrication
- Rubber block drive
- Ratios: 1.45-1, 2.00-1, 2.48-1, 2.95-1, 3.39-1, 3.83-1, 4.50-1 and 4.95-1
- Equipped with either SAE No. 1 or No. 2 housing
- Dry flywheel housing
- Both clutches removable with transmission attached to engine
- Superior performance and ratios forward or reverse
- Hydraulically-actuated and oil-cooled clutches shift with smooth, fast, fingertip response

The MG-509 Marine Transmission is the most popular marine transmission in its horsepower range. The 1.45-1, 2.00-1, 2.48-1, 2.95-1 and 3.39-1 ratio units are identical in design except for the size of the pinions and the countershaft gear. The 3.83-1, 4.50-1 and 4.95-1 ratio units use a deeper case as the center distance of the gears is greater. The carburized and hardened gears are shroud-mounted on anti-friction bearings on short, rigid shafts. The transmission may be purchased with an SAE No. 1 or No. 2 housing.

Three driving rings are available with the No. 1 housing and one driving ring with the No. 2 housing. Maximum shaft speed with Part No. A-6911 driving ring is 2300 rpm. The MG-509 is designed for full horsepower operation continuously in either forward or reverse position.

An externally-mounted heat exchanger, top-mounted power take-off, a mating propeller shaft coupling flange and a rolling valve assembly are available as optional equipment with the MG-509 Marine Transmission. The



Use Certified Print for Installation

DWG. NO.	RATIOS	A SAE No. 1	SAE No. 2	B	C	APPROX. DRY WGT.
X9816-F	1.45-1	396.7 mm (15.62")	419.6 mm (16.52")	173.2 mm (6.82")	148.6 mm (5.85")	259 kg (570 lbs)
	2.00-1					
	2.48-1					
	2.95-1					
X9835	3.39-1	441.5 mm (17.38")	464.3 mm (18.28")	241.0 mm (9.49")	238.8 mm (9.40")	327 kg (720 lbs)
	3.83-1					
	4.50-1					

rolling valve is applicable to both right-hand and left-hand rotation engines turning either right-hand or left-hand propellers.

Heat Exchanger

Kits available from Twin Disc consist of a heat exchanger with flexible hoses and necessary fittings for installation on the top cover plate of the transmission. Customers who wish to furnish their own heat exchanger should contact the nearest Twin Disc or marine engine distributor. When ordering, specify if raw or fresh water is to be used in the heat exchanger. Heat exchanger can be remotely-mounted if a top PTO is used.