

# GR201 - Asea

STATUS

Available

REF. NUMBER

GR201

MANUFACTURE

Asea

TYPE

GAC30-41

VOLT

390

KVA

207

RPM

1500

HZ

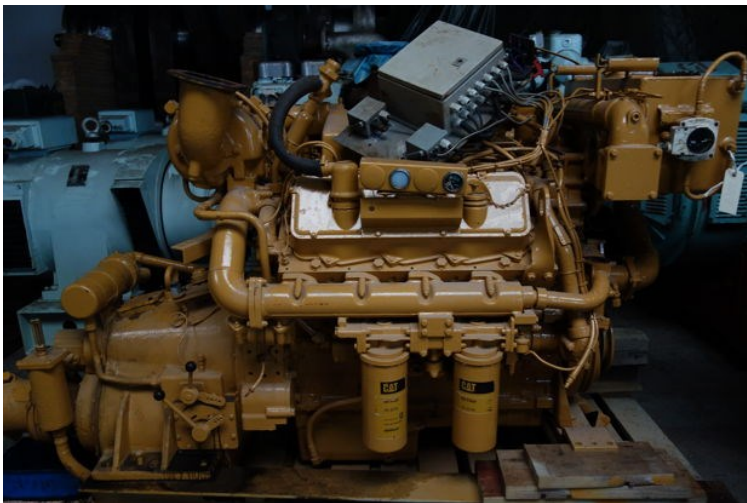
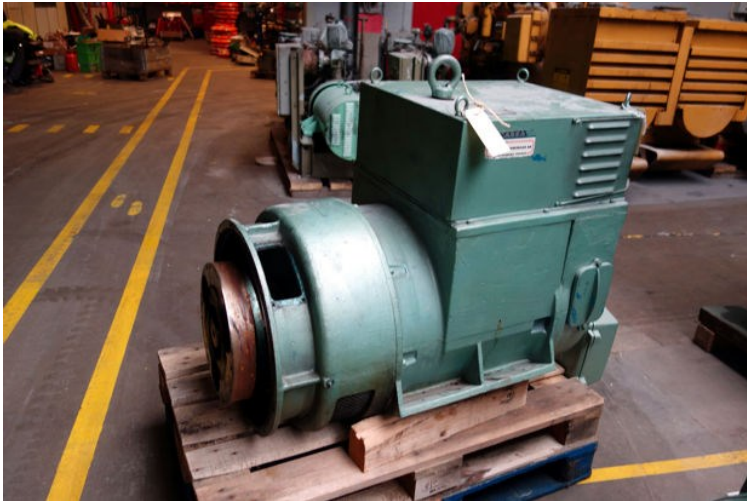
50

FABRIKS NR.

6577902

AMP

306



VÄRME

220

V

200

W

# ASEA

|                |                         |
|----------------|-------------------------|
| Gen. 3 ~ 50 Hz | IEC 34-1                |
| GAC 30-41      | No. 6577 902            |
| 207 kVA x 0.8  | 1500 r/min              |
|                | Class: Stator F Rotor F |
| 390 V Y        | 306 A                   |
| Exc. -55 V     | Exc. 43 A               |
| at. No.        | IP 23S 990 kg           |

MADE IN SWEDEN

FABRIQUE EN SUÈDE

SMORJ vid första start tills fett tränger ut ur fettutloppet. Torka nippelarna rena!  
LUBRICATE at first start until grease is forced out of the outlet. Clean the nipples!

SMORJ under drift varje lager med kullagerfett. LUBRICATE when running with ball bearing grease.

| Fettmängd per lager<br>Quantity per bearing | Drift<br>Service | Smörjintervall<br>Lubric. interval |
|---|------------------|------------------------------------|
| 60 g  | 8 h              | 12 mån.<br>month                   |
|   | 24 h             | 6 mån.<br>month                    |