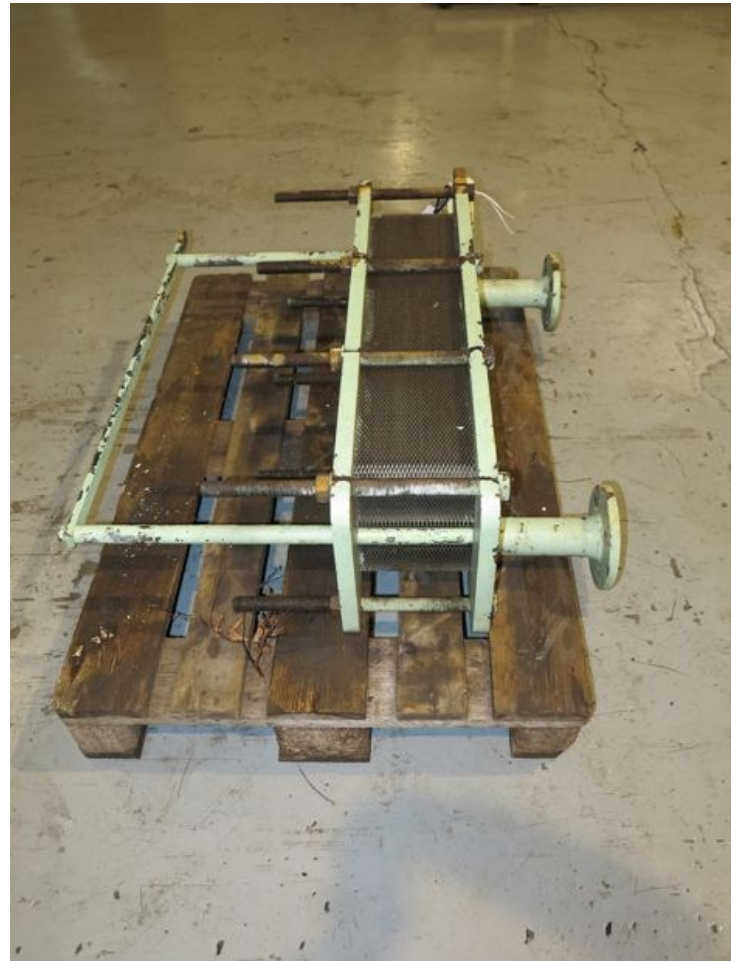


HE212 - Sondex

| | |
|-----------------------------|-------------------|
| STATUS | Available |
| REF. NUMBER | HE212 |
| PLATE/TUBE | Plate |
| MANUFACTURE | Sondex |
| TYPE | S15-IG |
| SERIAL NO. | 21269 |
| YEAR | 2001 |
| SURFACE M2 | 8,25 |
| WORKING PRESS/TEMP | 6 bar |
| DIM. (L*W*H) CM (PLADE MÅL) | 95*30*22 |
| REMARKS | Ex. Maersk Helper |



SONDEX A/S

PLATE HEAT EXCHANGER TYPE SLI JG

MANUFACTURING NO. 21269

NOMINAL CAPACITY kW 150

TRANSMISSIONS SURFACE M² 8,25

ASSEMBLING MEASURE MIN. M 165

MAX. WORKING PRESSURE Bar 6 / 6

VOLUME IN LTR PRODUCT SIDE 9,5

WORKING TEMP. MIN. C° 0

YEAR 2001

L.H. 4201

MAX. TEST PRESS. BAR 8 / 8

VOLUME IN LTR MILD SIDE 9,5

WORKING TEMP. MAX. C° 150



IMPORTANT:

If the plate is damaged or worn, it must be replaced with a new one. The use of a damaged plate may cause leakage of the product. The manufacturer is not responsible for any damage caused by the use of a damaged plate.

SONDEX A/S DK-6000 KOLDING DENMARK

ING. PER GJERDRUM A/S
N-1395 Hvalstad-Norway

Pump type

Prod. No. Year

PG-order No. 20070781

Cap. m³/h bar

rpm kW

