

STATUS

Available

REF. NUMBER

HP4

PUMP MANUFACTURE

Oilgear

PUMP TYPE

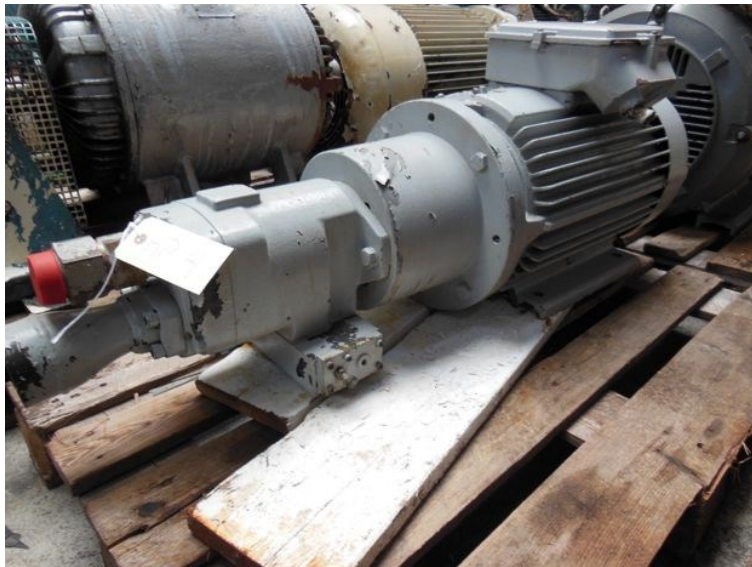
PVWH34RSAYCNNN

PUMP PRESSURE (BAR)

241,4

PUMP FLOW (LITER/MIN.)

127,7





LONNIE		ELECTRIC MOTORS	
WINDING	MOT. 3~	TYP	F1801D4
IP55	IM1001	No	22142
22	kW	30	HP
220/400	V	50	Hz
70/40,5	A	cos φ	0,87
1480	min	M _{max} /M _n	
M/30°C		ISOL	F 200 kg
			480 V

