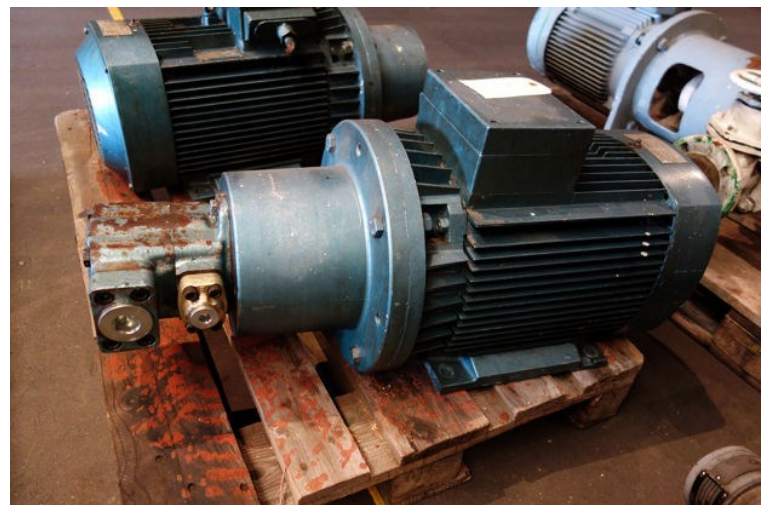


HP810

STATUS	Available
REF. NUMBER	HP810
PUMP MANUFACTURE	Vickers
PUMP TYPE	25V12A 1C 10L
PUMP PRESSURE (BAR)	140
DISPLACEMENT (CM3/R)	39
PUMP FLOW (LITER/MIN.)	47
MOTOR MANUFACTURE	Asea M 160 L-6
MOTOR KW	9,5
MOTOR VOLT	380
MOTOR RPM	960
REMARKS	Max pressure: 172 bar

PDF [eaton_vickers_20v_25v_35v_45v](#)





ASEA

Motor	3 ~ 50	Hz	IEC 34-1
	M 260 L-6	No.	6666 898
	kW	hp	960 r/min
		Cl.	B cos φ =
Prim.	 V	Prim.	 380 V
	A	Δ	 24 A
		Sec.	V A
Cat.No.	S:		kg
SEN 2601 + 260402		Made in Sweden Fabriqué en Suède	