

STATUS

Available

REF. NUMBER

HS287

PUMP MANUFACTURE /TYPE

Danfoss 90L 130 KA5NN80 L4F1 H03 GBA 424224

PUMP PRES. (BAR)

450

DISPLACEMENT (CM3/R)

130

ELECTRONIC MOTORS MANUFACTURE

ASEA

ELECTRONIC MOTORS KW

90

ELECTRONIC MOTORS VOLT

380

ELECTRONIC MOTORS HZ

50

ELECTRONIC MOTORS RPM

1465

TANK DIMENSION (CM) L

40

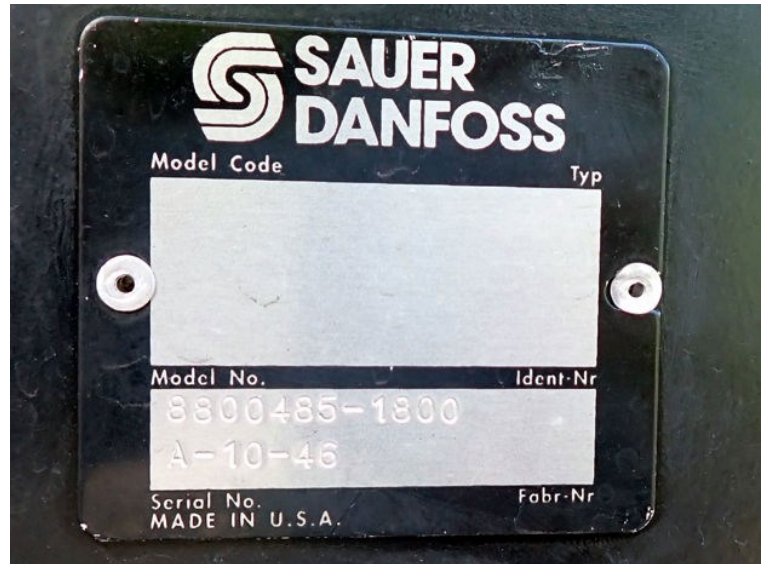
TANK DIMENSION (CM) W

40

TANK DIMENSION (CM) H

80





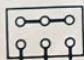
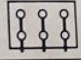
ASEAMADE IN SWEDEN
FABRIQUÉ EN SUÈDE

Motor MBM 28CM

3 ~ 50 Hz No. 7520660

90 kW 1465 r/min

Cl. B $\cos\varphi$ 0,90

Prim.		660 V	Prim.		380 V
Y		95 A	Δ		162 A

Sec. V A

Cat. no. IP 54 470 kg

SEN 2601 IEC 34-1