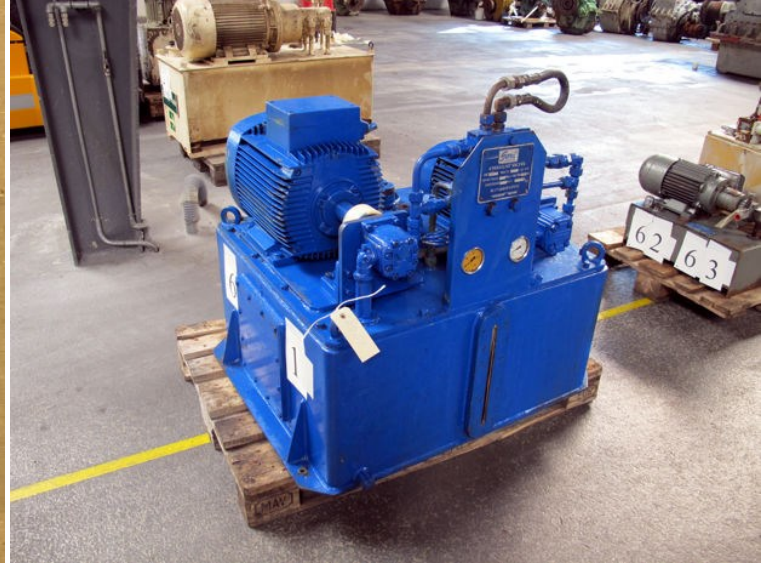


STATUS	Available
REF. NUMBER	HS61
PUMP MANUFACTURE /TYPE	Servi-pump Norway
PUMP PRES.	205/205
PUMP FLOW (L/MIN.)	9/25
ELECTRONIC MOTORS MANUFACTURE	Asea iec 34-1-1960-Asea iec 34-1
ELECTRONIC MOTORS KW	11-3,7
ELECTRONIC MOTORS VOLT	400/400
ELECTRONIC MOTORS HZ	50/50
ELECTRONIC MOTORS RPM	1420/1450
TANK DIMENSION (CM) L	85
TANK DIMENSION (CM) W	75
TANK DIMENSION (CM) H	40
REMARKS	Nr. 28701







HYDRAULISK ANLEGG

NR. 28791 YDELSE 9/25 l. pr. min.

TRYKK MAKS. 210 kg/cm² MOTOR 5 HK

SPENNING Volt 12/16

1/2 CYLINDERSERVICE

TRONDHEIM - NORWAY