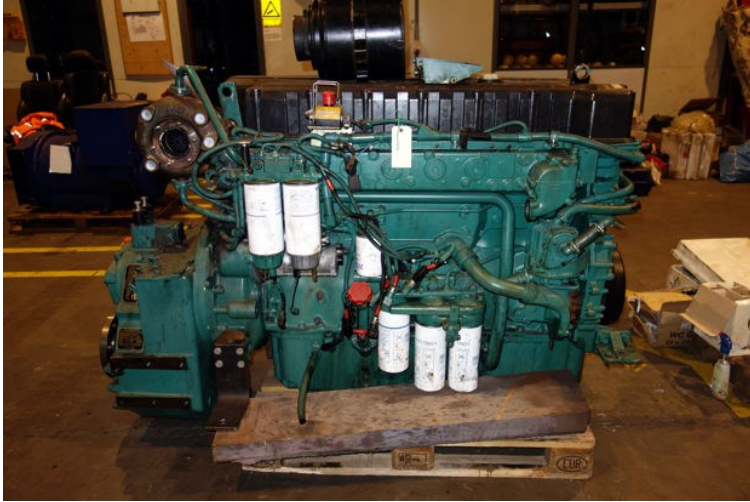


M2113 - Volvo Penta

STATUS	Available
REF. NUMBER	M2113
MANUFACTURE	Volvo Penta
TYPE	D12D-B MH
ENGINE NO.	Serie 1012496855 Spec. No. 868944 Chassis VP031870
HP	400
RPM	1800
REMARKS	294 kW.





VOLVO PENTA

D12D-B MH

RATED POWER: 294kW

RATED SPEED: 1800 RPM

MSW: 20548838

DST1: 20575971

DST2: 20541842

Spec. No. 868944

ENGINE CHASSIS ID.

VP 031870

ENGINE SERIAL NO.

1012496855