

M2435 - Detroit

STATUS

Available

REF. NUMBER

M2435

MANUFACTURE

Detroit

TYPE

Model 6055-C

ENGINE NO.

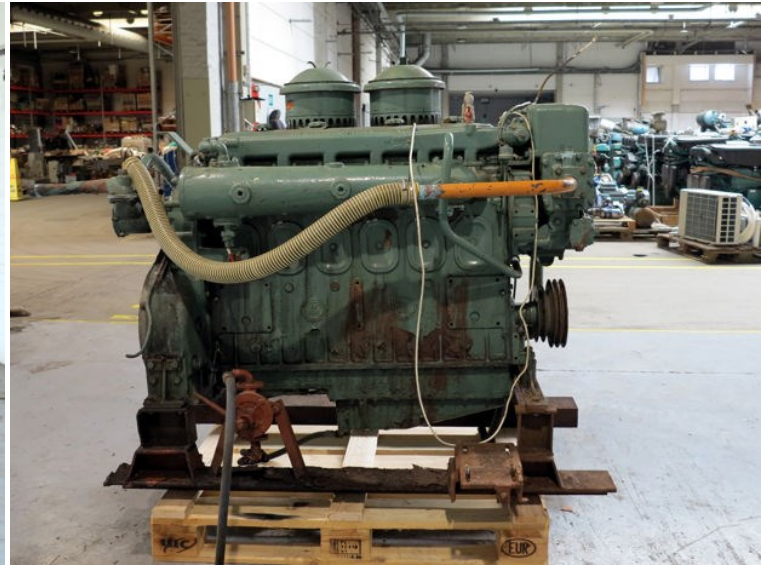
6A-133441

RPM

1940

REMARKS

(6 cyl)





| OPTIONS | | EQUIPMENT | | LOGGING | |
|--------------------------------|----------------|-----------|-----------------|---------|-----|
| | | TYPE | | TYPE | |
| DETROIT DIESEL ENGINE DIVISION | PLYMOUTH, IND. | 2E | WATERPUMP, 40 | 14D | 4L |
| DETROIT, MICHIGAN U.S.A. | OTM DIST. | 2D | DEFLECTOR | | 5C9 |
| MODEL 3055-C | VENT. SYSTEM | 2E | CRIGHT. CYL. | | 8 |
| UNIT NO. SA-122441 | FAN SHROUD | 2E | VAL. CONT. | | 11 |
| MAX. RPM NO LOAD 1940 | FUEL PUMP | 2E | FUEL FILTER | | 17 |
| RATED HP AT | WATER | 2E | THROTTLE CONT. | | 181 |
| CONT. HP AT | ROCKER CYLS | 2E | WATER OIL. GIP. | | 182 |
| | INJECTOR | 12 | WATER OIL. GIP. | | 183 |

