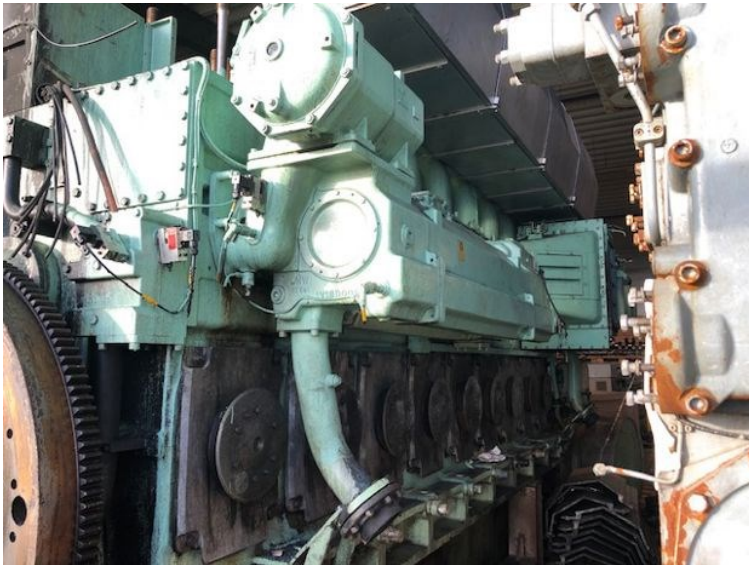


Wärtsilä - W8L32

STATUS	Available
REF. NUMBER	M2552
MANUFACTURE	Wärtsilä
TYPE	W8L32
ENGINE NO.	Engine no. 21305 Spec.: 17315
HP	5000
RPM	750
YEAR	2001
VESSEL	Maersk Helper
REMARKS	Wärtsilä W8L32, clockwise. P.S. Mid engine, cylinder heads sold. hours: 42.087



SIDET OR-SPAIN

C-75277

F-70760

P-500

42CrNi4

DRW-1V11A0357B

DET NORSKE VER-

17/830400-222

06/10/00