

# PU532 - KSB

STATUS

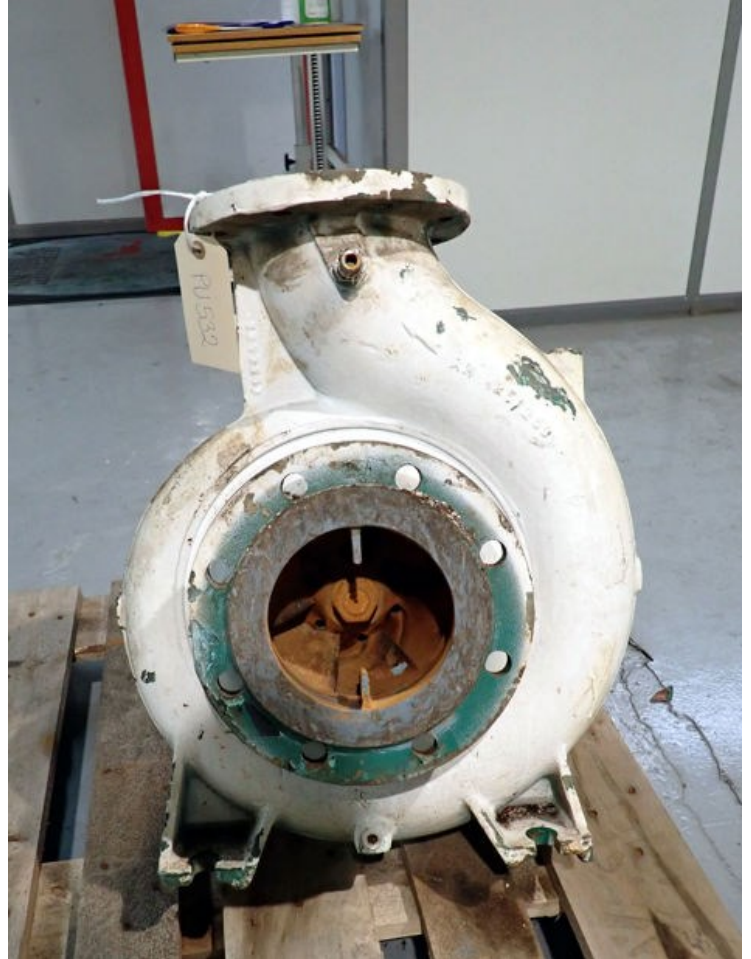
Available

REF. NUMBER

PU532

MANUFACTURE

KSB





8.10.2020 KSB Etaloc ETB 150-125-250/01104 160M Closed-coupled Pump (ETB 150-125-250/01104 160M)

Contact us: +45 162 419 900

**LENNTECH**

Home / Products / KSB Etaloc / ETB 150-125-250/01104 160M Closed-coupled Pump  
*125-250*

### KSB Etaloc ETB 150-125-250/01104 160M Closed-coupled Pump

Part Number: ETB 150-125-250/01104 160M  
 Please contact us for more information and/or a quotation request.

<b>Specifications</b>	
Brand	KSB Etaloc
Model	150-125-250/01104 160M
Type	Closed-coupled Centrifugal Pump
Max Pressure bar	~ 16
Flow l/min	5300
Flow m <sup>3</sup> /h	360
Motor rpm	1450
Impeller rpm	2000
Temp max °C	-30 ~ + 140

<b>Dimensions / Weights</b>	
Size DN in	150
Size DN out	125
Application	Cooling circuits, Water supply systems, Service water supply systems, Drainage

[Download Datasheet](#)

[BUY NOW](#)

[Request for Quote](#)

We ship to Denmark

KSB Etaloc

The compact close-coupled pump for small spaces, Etaloc comes into its own in situations where every centimeter counts, with pump and motor connected in one compact unit the close-coupled pump features a space-saving design.

Search Filters and Restrictions

https://www.lenntech.com/products/KSB-Etaloc/ETB-150-125-250-01104-160M/ETB-150-125-250-01104-160M-Closed-coupled-Pump/index.html 1/2