

STATUS

Available

REF. NUMBER

TC110

MANUFACTURE

ABB

TYPE

TPL 69-A10

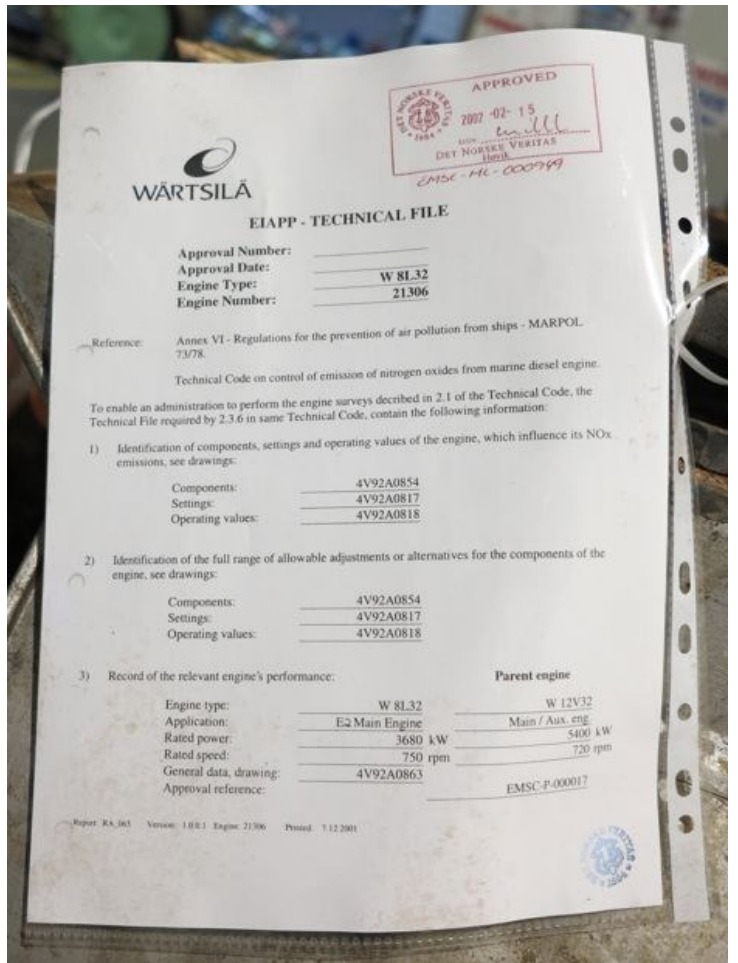
FROM ENGINE:

Wärtsilä W8L32

REMARK

Year 2008. HT 447348. nMax 438 1/s tMax 650 c







**Technical File
for ABB Turbocharger on Engine with
IMO-NOx-Certification**

Type of Turbocharger: TPL 69-A10

Serial-No.: HT 447348

General instruction about identification of the turbocharger's air- and gasflow components. Turbocharger Type, Serial-No. and operating limits are indicated on the rating plate. The rating plate is positioned on the turbocharger foot.

ABB ABB Turbocharger ABB Turbo Systems Ltd	
Type TPL 69-A10	HT 447348
P_{in} max 438	T_{in} max 650 °C
P_{out} max 416	T_{out} max 600 °C
\dot{V}_{in} max 12	50 30
CE 1558 kg	Application according to Operation Manual
made in Switzerland	



The designation of the turbocharger type consists of 3 letters an 2 digits for the size and 1 letter and 2 digits for the compressor type, e.g. TPL69-A10.

The traceability to the specification is given by the Serial-No., e.g. HT421524.

The thermo-dynamical characteristics (charge air pressure and air mass flow) of the turbocharger for this specific application will be specified by the following components: