

# IMO - B4F 052N2

STATUS

Available

REF. NUMBER

VP156

MANUFACTURE

IMO

TYPE

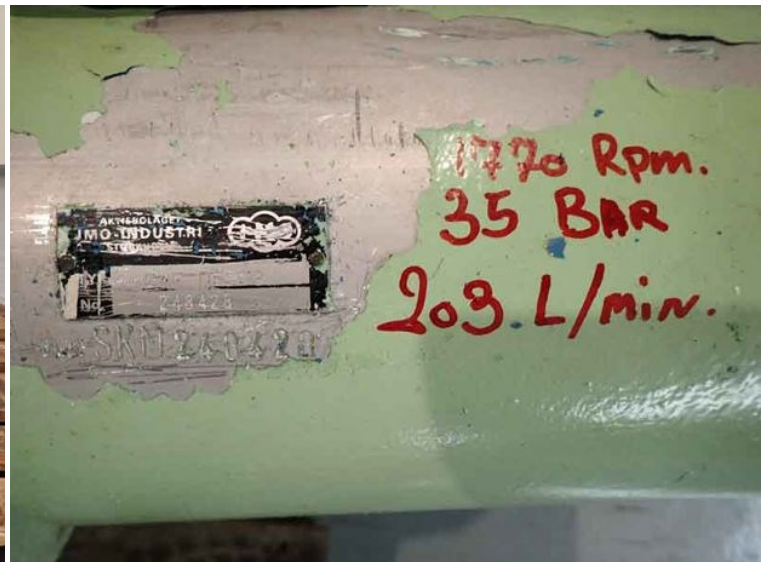
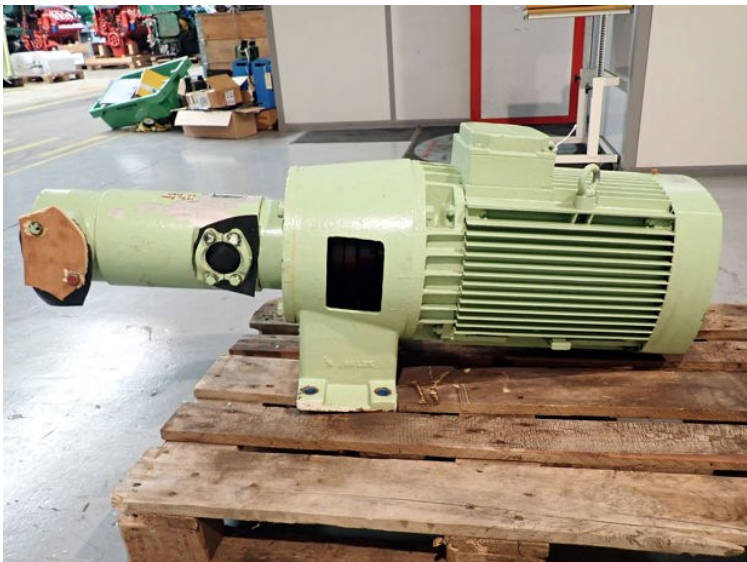
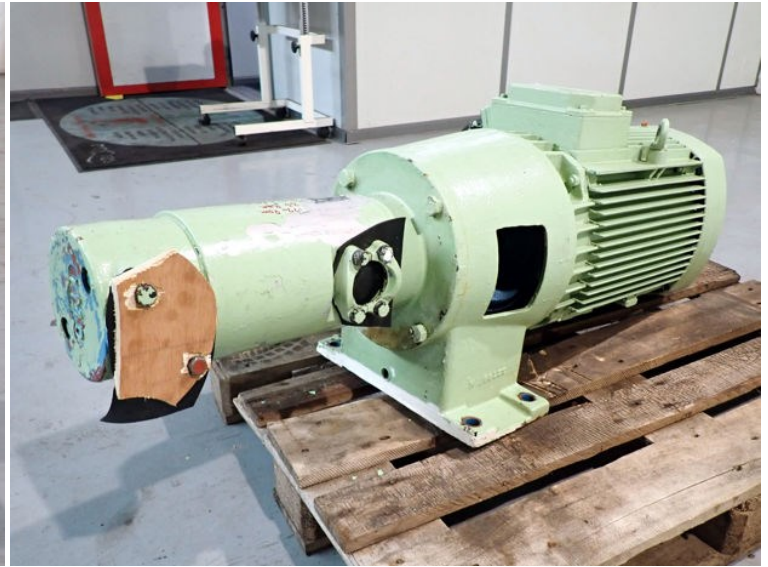
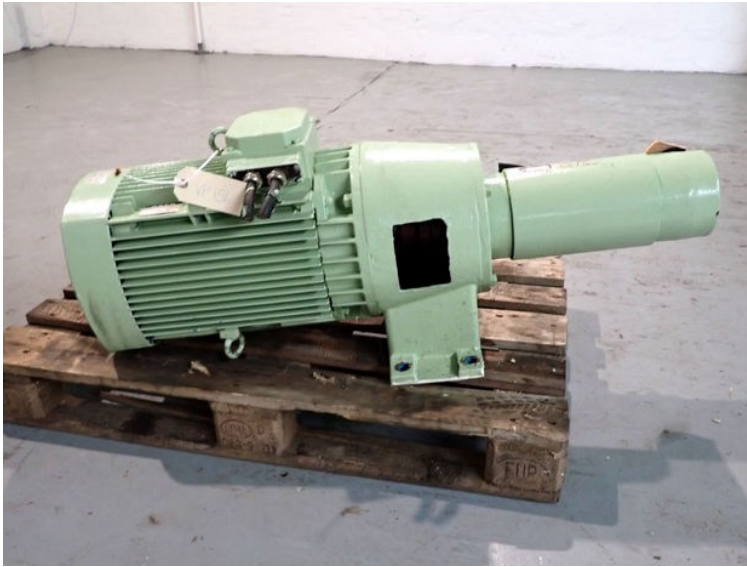
B4F 052N2

SERIE

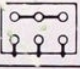

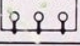

248428

REMARKS

203 l/m. 1770 rpm, 35 bar Motor: ASEA, 22 kW



# ASEA

Motor 3 ~ 60 Hz	
180 M	No. 7090 883
22 kW	1760 r/min
	Cl. F cos φ =
Prim.  V	Prim.  440 V
Y  A	Δ  330 A
	Sec. V A
at. No.	IP 54 kg

SEN 2601 IEC 34-1

Made in Sweden  
Fabrique en Suède