

SPECIFICATION RESCUE BOAT TYPE RB 400

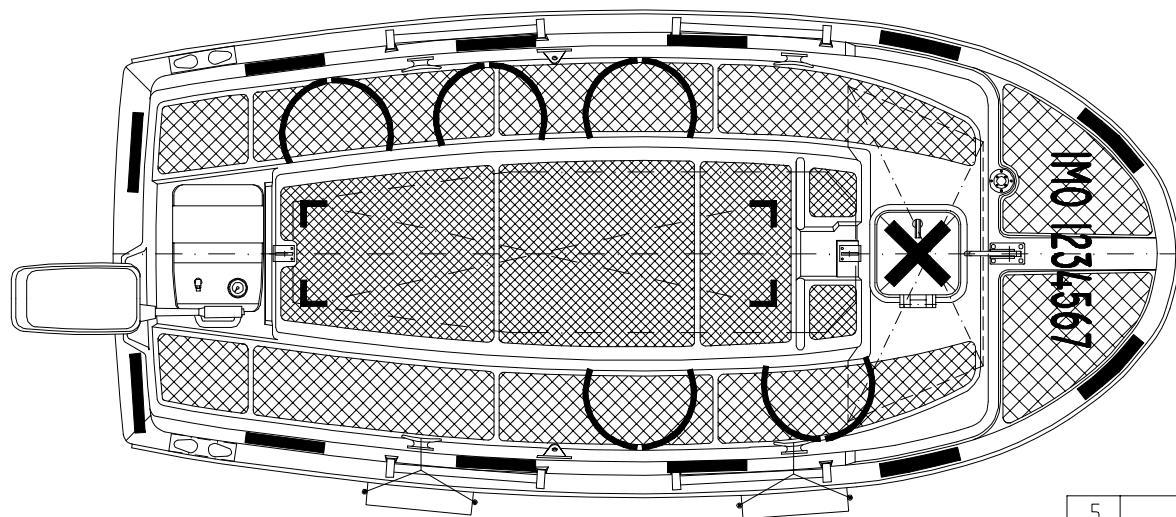
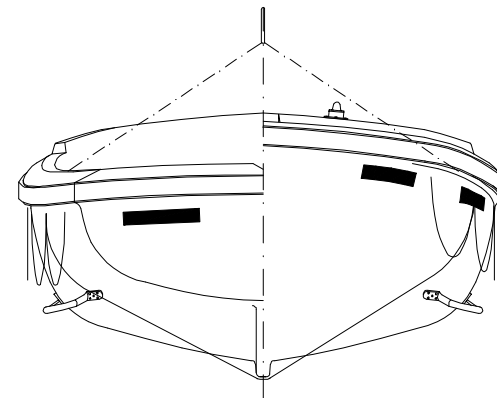
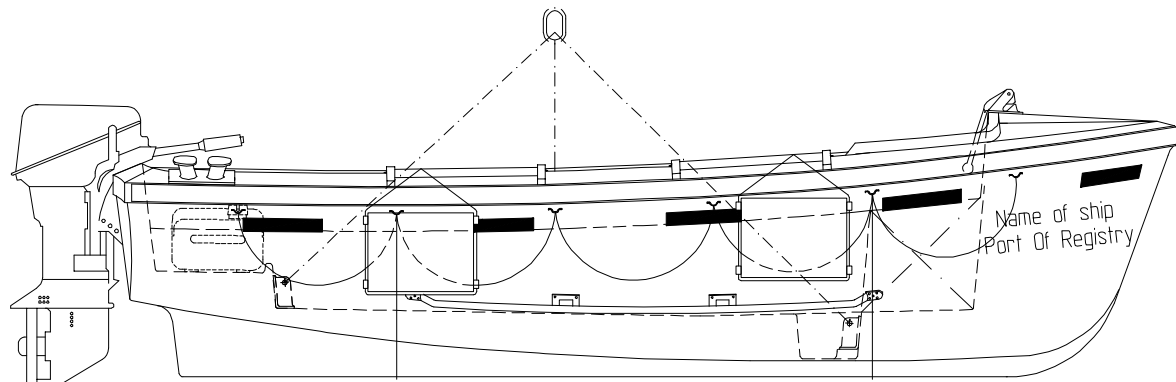
Dimensions:	over all: 4,50 x 1,90 m hull: 4,00 x 1,80 m
Capacity:	6 persons
Weight:	fully equipped without persons: 435 kg Launching weight with 6 persons: 930 kg
Material:	glass-fibre reinforced polyester (hand-laminated)
Colour:	hull and superstructure: orange
Buoyancy:	the spaces between the outer hull and the inner section are buoyancy tanks and filled with polyurethane hardfoam.
Engine:	approved outboard engine of min. 15 hp
Speed:	minimum 6 knots when fully loaded and more than 2 knots when towing a 25 persons liferaft.
Hoisting:	for recovery and launching the boat is provided with a 4-point sling with longeye
Fittings:	1 painter releaser forward, 2 bollards aft, 4 hoisting eyes, 1 radar reflector foundation, 2 cleats forward, 2 handrails on hull, 4 handrails on upper part 1 set of buoyant lifelines around the boat 1 set of retro-reflective tapes

all fittings are made of seawater-resistant materials and fastened with stainless steel bolts.

Inventory: inventory for rescueboats acc. to LSA-code Chapter V, Reg. 5.1 will be provided according to enclosed list.

Spare parts: spare parts will be provided according to enclosed list

Signs/Labels: for all handling functions and emergency operation plastic foil signs/labels are provided. The ships name and call sign can be fastened to yards request if submitted 2 weeks prior shipment.



Principal dimensions :

Length max. _____ 4,50 m
 Breadth _____ 1,80 m
 Depth _____ 0,70 m
 Weight with equiment and 15 hp engine _____ 435 kg
 Lowering weight with 6 pers. (82,5kg each) _____ 930 kg
 Speed min. _____ 6 kn

5						
4						
3						
2						
1						
REV.	ALTERATION		ALT. No.	DATE	EXECUTED NAME	EXAMINED NAME
DRAWN:	DATE: 2010-01-28	NAME: <i>F. H.</i>	HATECKE D-21706 Drochtersen . Germany			04143/9152-0 04143/9152-40 email@hatecke.de www.hatecke.de
EXAMINED:						
SCALE: 1 : 20	DOCUMENT TITLE: RB 400 General arrangement		DOCUMENT NO: GRB40-07			