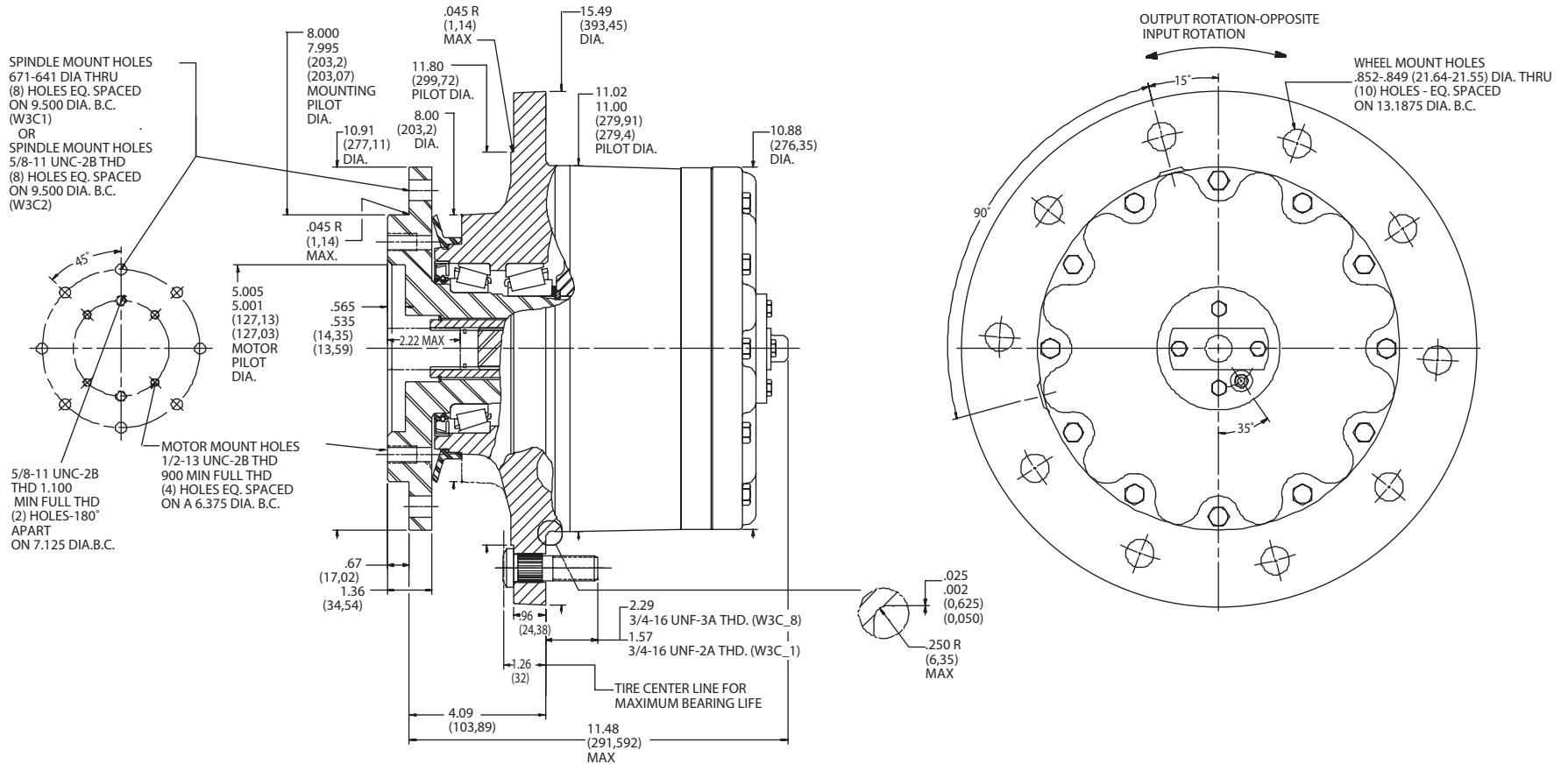


TORQUE-HUB®
Planetary Final Drives



oerlikon
fairfield

Catalog prints are representative of the units.
Before final design request a certified print from Fairfield.

NOTE: MM SHOWN IN ()
MOTOR CAVITY DIMENSIONS VARY WITH MODEL

OTHER MODELS ALSO AVAILABLE
FAIRFIELD BRAKE AVAILABLE

Torque-Hub® 3 Series

W3C

Performance Data

Continuous	Intermittent	Peak
37,500 lb-in	75,000 lb-in	100,000 lb-in
3,125 lb-ft	6,250 lb-ft	8,300 lb-ft
4,234 Nm	8,468 Nm	11,300 Nm
432 kg-m	864 kg-m	1,150 kg-m

For ultimate torque and horsepower capacities, contact a Torque-Hub® representative.

Speed Limitations

Input Speed: 4,000 RPM Maximum
Horsepower: Contact Fairfield

Weight

Approximately 205 lbs (94Kg)

Note: Specific models will change weights.
 Gear kit available for this assembly.
 Consult Fairfield for details.

W3CN Model Formula

W – Torque-Hub® Wheel Drive

3 – Series

Oil

Fill to half full with 90 weight gear lube with EP additive on most applications.

Approximate Volume 44 oz. (1,301 cm³)

Note: Oil level and type will vary depending on specific model and application.

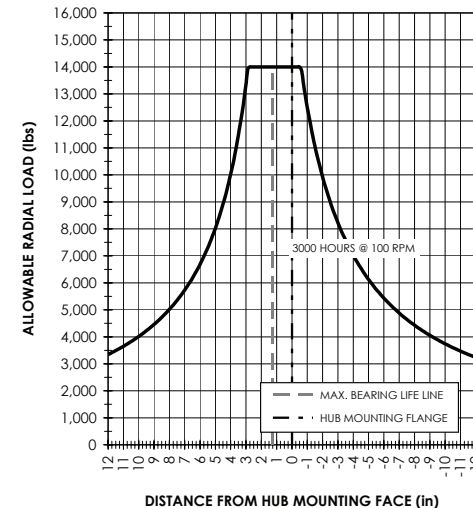
Conditions of Bearing Curve

Life = 3,000 hours B-10
Speed = 100 RPM output

To adjust for loads and speeds other than shown on curve:

$$\text{Adjusted Life (hrs)} = 3,000 \left(\frac{100 \text{ RPM}}{\text{Speed (Adjusted)}} \right) \times \left(\frac{\text{Load (Curve)}}{\text{Load (Adjusted)}} \right)^{10/3}$$

Bearing Curve



W 3 CN 1 0 3 43 ZB

Special Features

ZB – Standard Disconnect
XB – Coupling Subassembly with Antidissengage Spacer

Special Options

0 - Blank
Z - Seal Boot

Reduction

18 – 18.75:1
24 – 24.43:1
30 – 30.04:1
35 – 34.49:1
43 – 42.50:1
54 – 53.58:1
73 – 72.68:1

Input

3 – 13T, 16/32 Spline
4 – 14T, 16/32 Spline
8 – 15T, 16/32 Spline

Studs in Wheel Flange

0 – Not Included
1 – 3/4-16 thread by 2-17/32 in. (use with cast iron hub)
5 – 3/4-16 thread by 2-5/8 in. (use with steel hub; not available with BL and BN hubs)
8 – 3/4-16 thread by 3-1/4 in. (use with cast iron hub)

	Spindle			Hub		
	Motor Mount	Flange Mounting Dia.	Motor B.C.	Frame B.C.	Mounting Dia.	Flange B.C.
CN	SAE "C"	$\frac{8.000}{7.995}$	(4) 1/2-13 6.375 B.C.	(8) .671-.641 9.500 B.C.	11.020 11.000	(10) .852-.849 13.1875 B.C.
C2	SAE "C"	$\frac{8.000}{7.995}$	(4) 1/2-13 6.375 B.C.	(8) 5/8-11 9.500 B.C.	11.020 11.000	(10) .852-.849 13.1875 B.C.
C6	SAE "C"	$\frac{8.000}{7.995}$	(4) 1/2-13 6.375 B.C.	(8) 5/8-11 9.500 B.C.	11.020 11.000	(10) .875-.873 13.187 B.C.

æerlikon
fairfield

Fairfield Manufacturing Company, Inc.

First in Custom Gears and Drive Systems

www.fairfieldmfg.com