

Measurement records
Wichmann AXG/AXAG

Installation (ship): M2560 Engine type/No: 4AXAG Var: 3AX-2000PS1
ID No : 08 Temperature (°C): 9 Engine running hours:

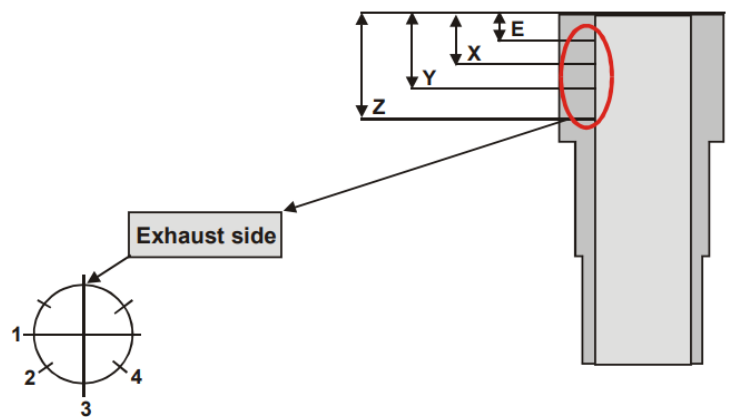
Remarks: The liner is measured directly when it's removed from engine.

Cylinder Liner

The measures show 1/100 mm
above / under basic measure (300)

Max. wear cylinder liner: X = 301
Max. wear cylinder liner: Y and Z = 300,6
Ovality max.: X = 0,35
Ovality max.: Y and Z = 0,20

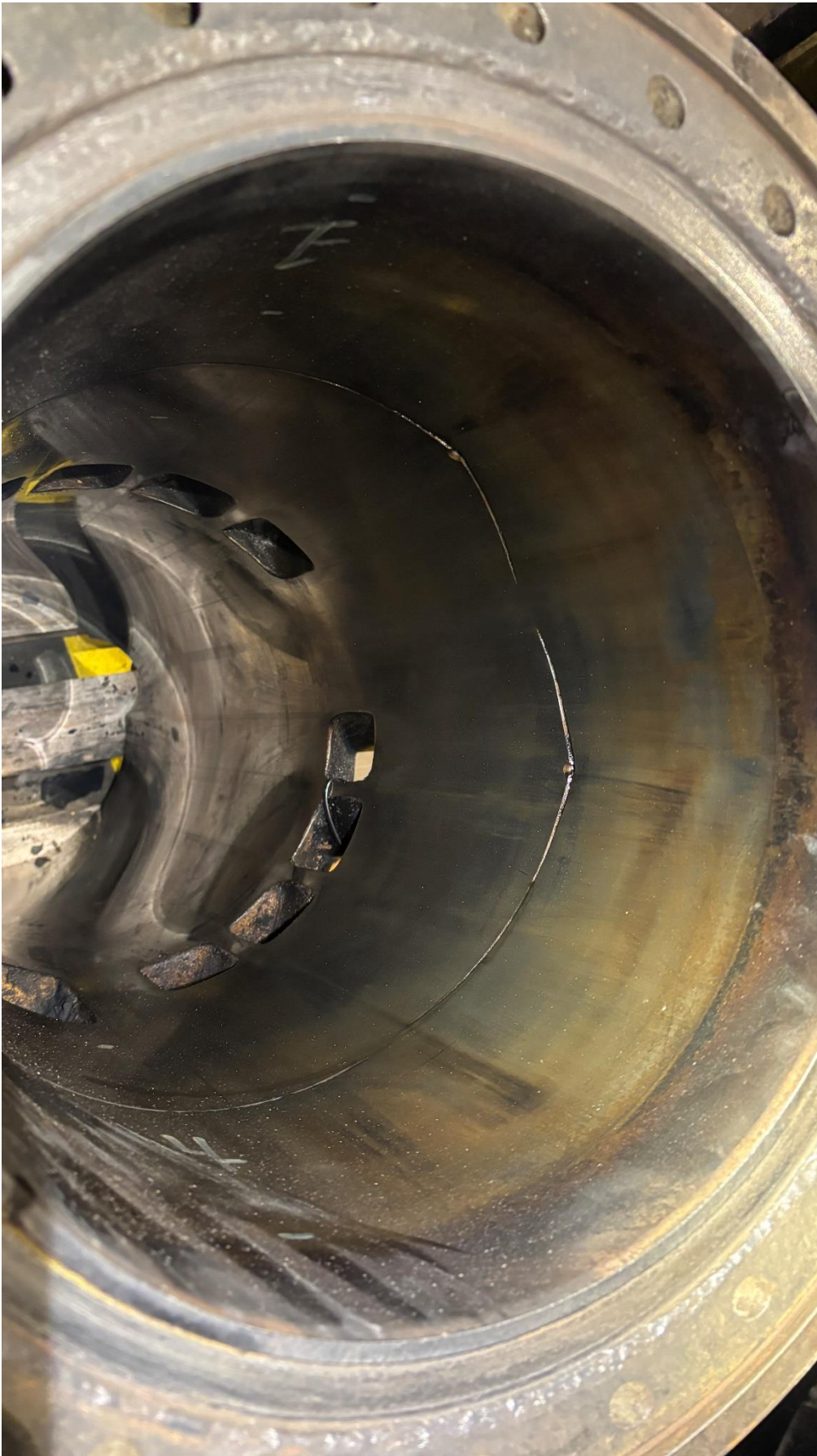
<u>AX/AXG</u>	<u>AXA/AXAG</u>
E = 65	E = 40
X = 86	X = 60
Y = 150	Y = 124
Z = 300	Z = 274



Measurements point	E-measures		X-measures				Y-measures				Z-measures			
	1	3	1	2	3	4	1	2	3	4	1	2	3	4
Measurements	02	01	03	02	03	05	03	03	05	06	02	05	08	09

Measurements point	Average waer			Maxium ovality		
	X-measures	Y-measures	Z-measures	X-measures	Y-measures	Z-measures
Measurements	0325	0425	06	03	03	06

Measurement records
Wichmann AXG/AXAG



Measurement records
Wichmann AXG/AXAG



Measurement records
Wichmann AXG/AXAG



Measurement records
Wichmann AXG/AXAG

