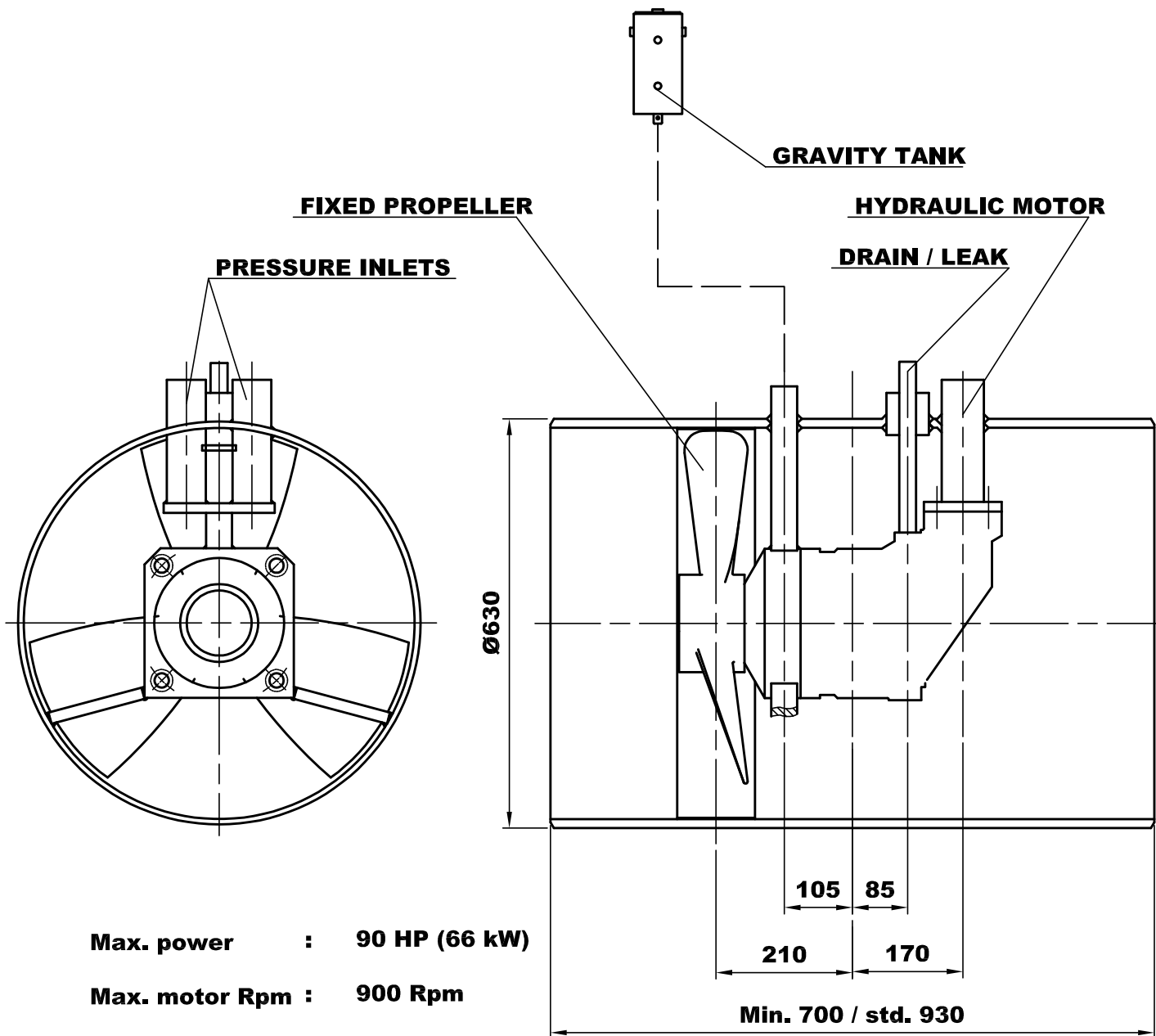


FT3 BOW THRUSTER



Max. power : 90 HP (66 kW)

Max. motor Rpm : 900 Rpm

Hydraulic flow : 135 l/min.

Hydraulic pressure : 300 bar.

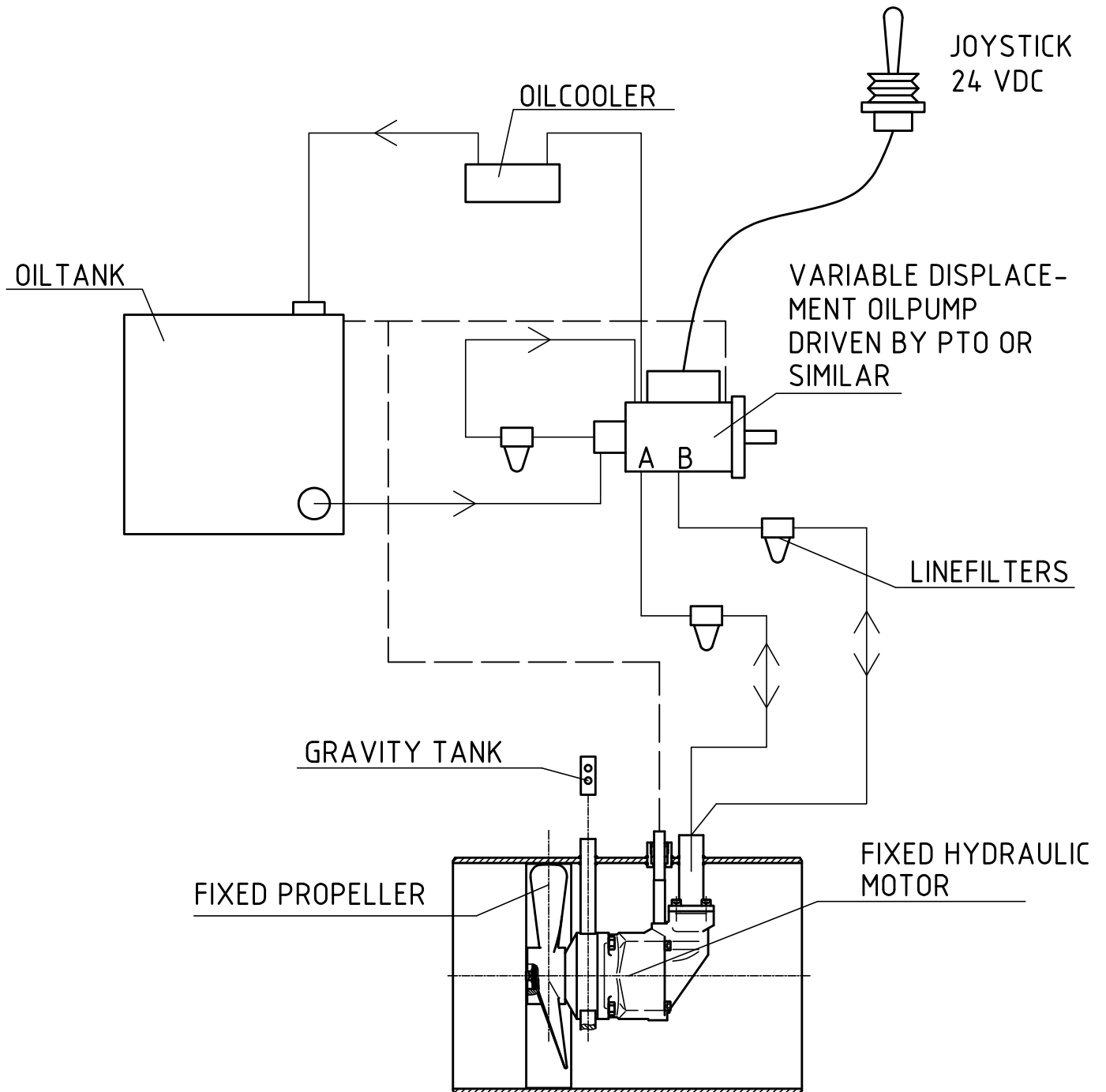
Max. thrust : Approx. 105 N / HP - 9450 N

Displacement of motor ³150 cm / rev.

Overall weight, at 930mm thruster tunnel, 305 Kg

4-048-012959-1

FT3 HYDRAULIC DRIVE UNIT CLOSED SYSTEM



4-048-012919-0